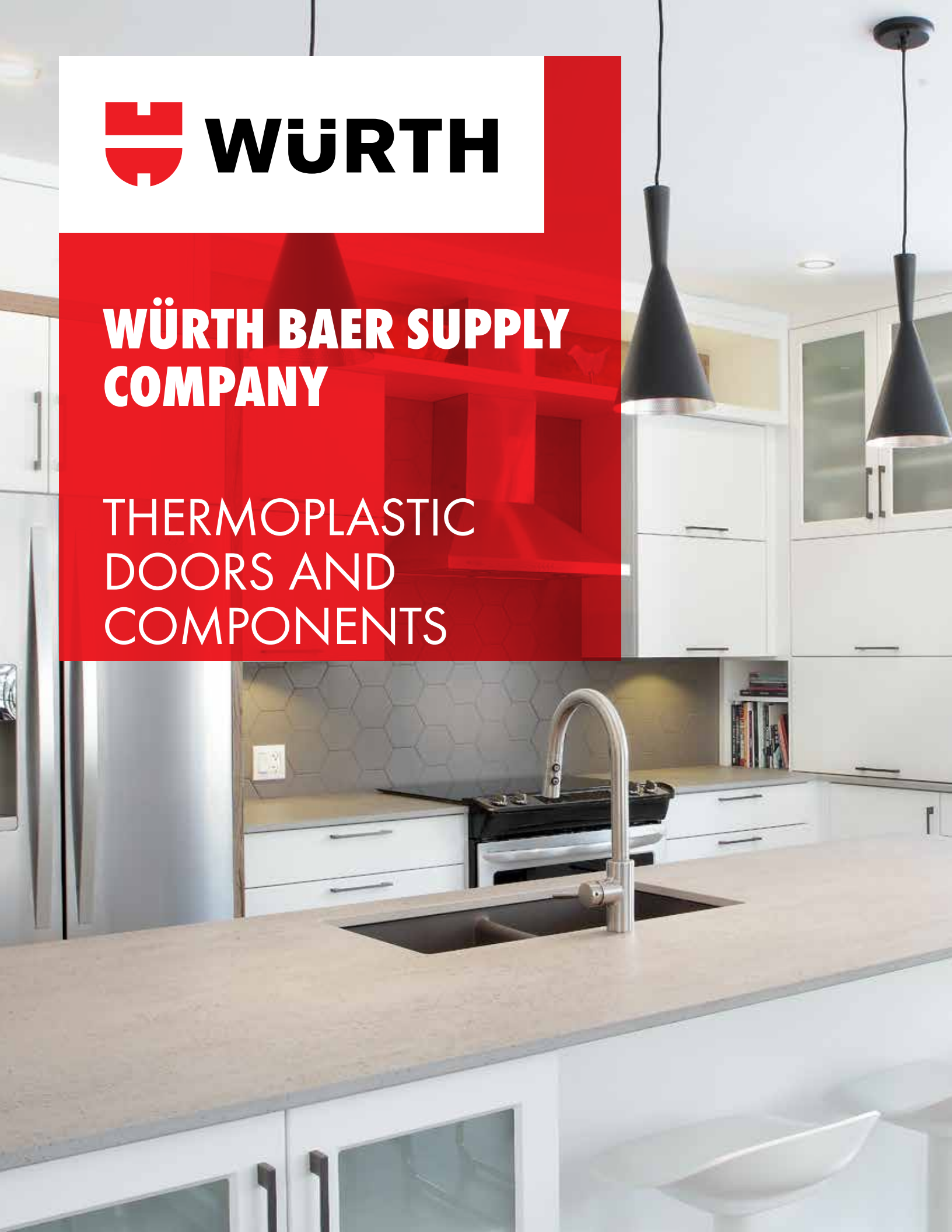




# WÜRTH BAER SUPPLY COMPANY

THERMOPLASTIC  
DOORS AND  
COMPONENTS





## **TABLE OF CONTENTS**

---

**01** DISCOVER OUR THERMOPLASTIC DOOR OPTIONS

### **Door models**

---

**03** SHAKER

**08** SLAB

**10** STANDARD

**12** SPECIAL

### **Personalized signature**

---

**16** FRAME AND MULLION DOORS

**18** PANELS

**19** MOULDINGS AND ACCESSORIES

**26** COLORS AND FINISHES

### **Information**

---

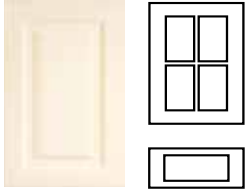
**24** TECHNICAL SPECIFICATIONS

**29** WARRANTY

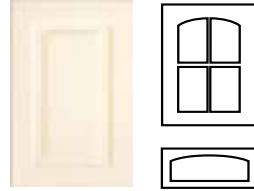
# DISCOVER OUR THERMOPLASTIC DOOR OPTIONS

## DESIGN

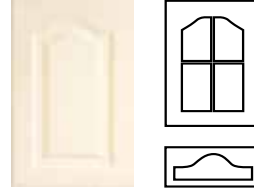
Square



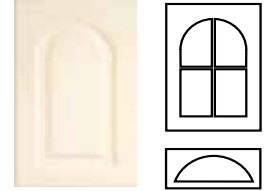
Arch



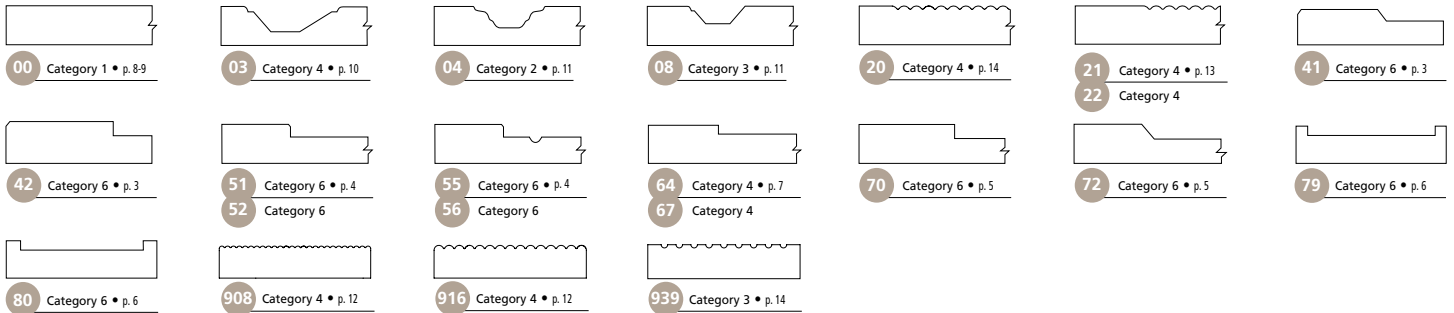
Cathedral



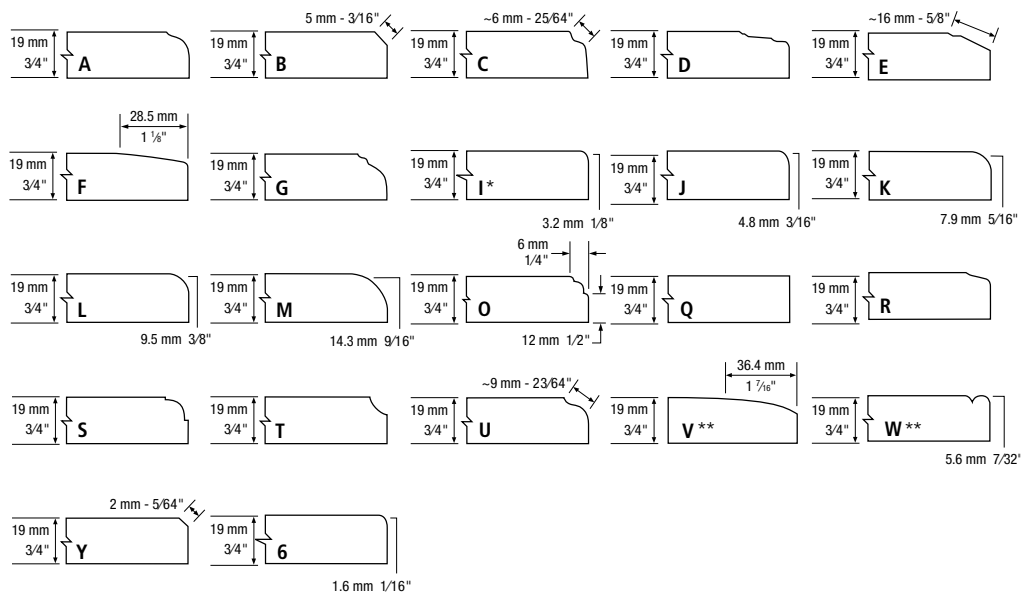
Half Circle



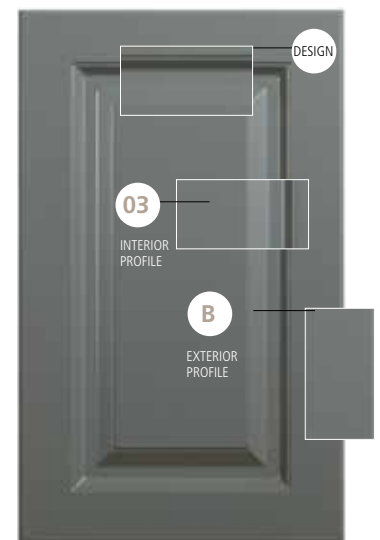
## INTERIOR PROFILE



## EXTERIOR PROFILE



## RESULT



\*\* Exterior profiles V and W available with an upcharge.



# DOOR MODELS

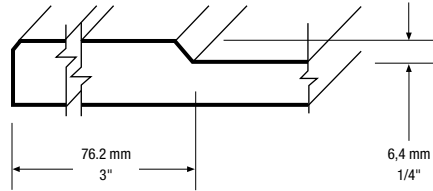
SHAKER  
SLAB  
STANDARD  
SPECIAL

## STANDARD SPECIFICATIONS

- White melamine back
- The default woodgrain direction is vertical

- Shaker drawer fronts are manufactured with regular rails (unless reduced rails are specified)
- Maximum door height: 2438 mm (96"), maximum door width: 1193 mm (47")

### SERIES 41 Category 6



Regular rails  
38.1 mm  
1 1/2"

Reduced rails

#### Minimum dimensions

Doors and drawer fronts (Height x Width)

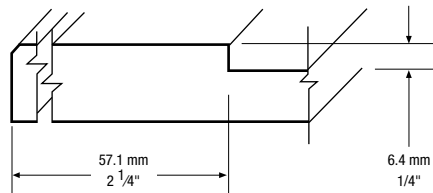
Design	mm	inches
Square	177.8 x 177.8	7 x 7

Reduced rails drawer fronts (Height x Width)

Design	mm	inches
Square	101.6 x 177.8	4 x 7

Default exterior profile: Y

### SERIES 42 Category 6



Regular rails

Reduced rails

#### Minimum dimensions

Doors and drawer fronts (Height x Width)

Design	mm	inches
Square	139.7 x 139.7	5 1/2 x 5 1/2

Reduced rails drawer fronts (Height x Width)

Design	mm	inches
Square	101.6 x 139.7	4 x 5 1/2

Default exterior profile: Y

# SHAKER MODELS

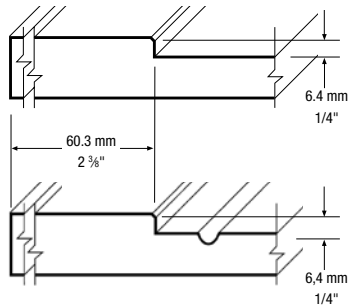
## OPTION:

- See availability of same color melamine back, page 26.

## SERIES 51 Cat. 6 / 55 Cat. 6



51 | Shaker style



55 | Shaker style with grooves

The first groove starts at the center of the door



### Minimum dimensions

#### Doors and drawer fronts (Height x Width)

Design	mm	inches
Square	146.0 x 146.0	5 3/4 x 5 3/4
Arch	161.0 x 146.0	6 11/32 x 5 3/4
Cathedral	186.0 x 200.6	7 11/32 x 7 29/32
Half Circle	((W÷2) + 99.5) x 146.0	((W÷2) + 3 15/16) x 5 3/4

#### Reduced rails drawer fronts (Height x Width)

Design	mm	inches
Square	76.2 x 146.0	3 x 5 3/4
Arch	91.2 x 146.0	3 19/32 x 5 3/4
Cathedral	116.2 x 200.6	4 9/16 x 7 7/8
Half Circle	((W÷2) + 29.7) x 146.0	((W÷2) + 1 5/32) x 5 3/4

Default exterior profile: Y

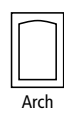
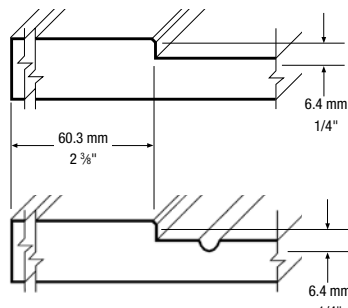


55  
Category 6

## SERIES 52 Cat. 6 / 56 Cat. 6



52 | Shaker style



56 | Shaker style with grooves

The first groove starts at the center of the door



### Minimum dimensions

#### Doors and drawer fronts (Height x Width)

Design	mm	inches
Square	146.0 x 146.0	5 3/4 x 5 3/4
Arch	161.0 x 146.0	6 11/32 x 5 3/4
Cathedral	186.0 x 200.6	7 11/32 x 7 7/8
Half Circle	((W÷2) + 99.5) x 146.0	((W÷2) + 3 29/32) x 5 3/4

#### Reduced rails drawer fronts (Height x Width)

Design	mm	inches
Square	76.2 x 146.0	3 x 5 3/4
Arch	91.2 x 146.0	3 19/32 x 5 3/4
Cathedral	116.2 x 200.6	4 9/16 x 7 7/8
Half Circle	((W÷2) + 29.7) x 146.0	((W÷2) + 1 5/32) x 5 3/4

Default exterior profile: Y



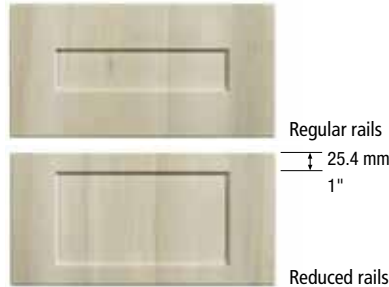
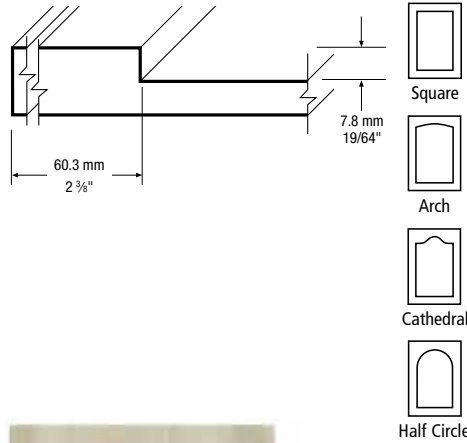
56  
Category 6

## STANDARD SPECIFICATIONS

- White melamine back
- The default woodgrain direction is vertical

- Shaker drawer fronts are manufactured with regular rails (unless reduced rails are specified)
- Maximum door height: 2438 mm (96"), maximum door width: 1193 mm (47")

## SERIES 70 Category 6



### Minimum dimensions

#### Doors and drawer fronts (Height x Width)

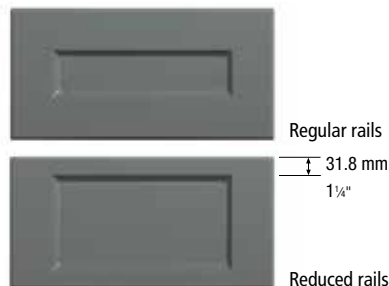
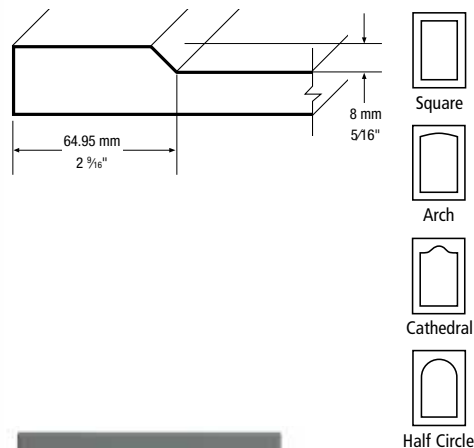
Design	mm	inches
Square	146.0 x 146.0	5 3/4 x 5 3/4
Arch	161.0 x 146.0	6 11/32 x 5 3/4
Cathedral	186.0 x 200.6	7 11/32 x 7 29/32
Half Circle	$((W \div 2) + 99.5) \times 146.0$	$((W \div 2) + 3 31/32) \times 5 3/4$

#### Reduced rails drawer fronts (Height x Width)

Design	mm	inches
Square	76.2 x 146.0	3 x 5 3/4
Arch	91.2 x 146.0	3 19/32 x 5 3/4
Cathedral	116.2 x 200.6	4 9/16 x 7 7/8
Half Circle	$((W \div 2) + 29.7) \times 146.0$	$((W \div 2) + 1 11/64) \times 5 3/4$

Default exterior profile: B

## SERIES 72 Category 6



### Minimum dimensions

#### Doors and drawer fronts (Height x Width)

Design	mm	inches
Square	155.3 x 155.3	6 1/8 x 6 1/8
Arch	170.3 x 155.3	6 23/32 x 6 1/8
Cathedral	195.3 x 193.9	7 23/32 x 7 21/32
Half Circle	$((W \div 2) + 79.8) \times 155.3$	$((W \div 2) + 3 1/8) \times 6 1/8$

#### Reduced rails drawer fronts (Height x Width)

Design	mm	inches
Square	91.3 x 155.3	3 5/8 x 6 1/8
Arch	106.3 x 155.3	4 3/16 x 6 1/8
Cathedral	131.3 x 193.9	5 3/16 x 7 21/32
Half Circle	$((W \div 2) + 15.4) \times 155.3$	$((W \div 2) + 39/64) \times 6 1/8$

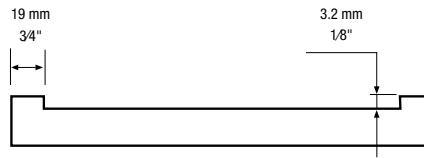
Default exterior profile: B

# SHAKER MODELS

## OPTION:

- See availability of same color melamine back, pages 26.

## SERIES 79 Category 6



Regular rails

### Minimum dimensions

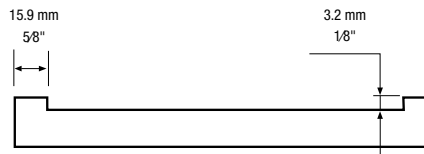
Doors and drawer fronts (Height x Width)

Design	mm	inches
Square	76.2 x 76.2	3 x 3

Default exterior profile: Y

Series 79 drawer fronts are manufactured with regular rails. Frame and mullion doors not available in this model. Available exterior profiles: I, J, Q, Y and 6.

## SERIES 80 Category 6



Regular rails

### Minimum dimensions

Doors and drawer fronts (Height x Width)

Design	mm	inches
Square	76.2 x 76.2	3 x 3

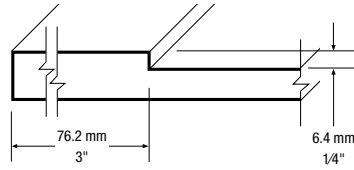
Default exterior profile: Y

Series 80 drawer fronts are manufactured with regular rails. Frame and mullion doors not available in this model. Available exterior profiles: I, J, Q, Y and 6.

## STANDARD SPECIFICATIONS

- White melamine back
- The default woodgrain direction is vertical
- Shaker drawer fronts are manufactured with regular rails (unless reduced rails are specified)
- Maximum door height: 2438 mm (96"), maximum door width: 1193 mm (47")

### SERIES 64 Category 4



Regular rails



Reduced rails

#### Minimum dimensions

##### Doors and drawer fronts (Height x Width)

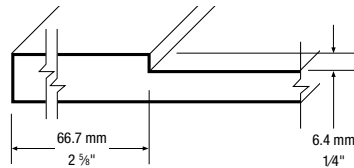
Design	mm	inches
Square	177.8 x 177.8	7 x 7

##### Reduced rails drawer fronts (Height x Width)

Design	mm	inches
Square	76.2 x 177.8	3 x 7

Default exterior profile: Y

### SERIES 67 Category 4



Regular rails



Reduced rails

#### Minimum dimensions

##### Doors and drawer fronts (Height x Width)

Design	mm	inches
Square	158.8 x 158.8	6 1/4 x 6 1/4

##### Reduced rails drawer fronts (Height x Width)

Design	mm	inches
Square	76.2 x 158.8	3 x 6 1/4

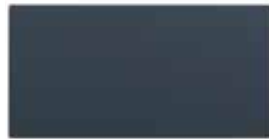
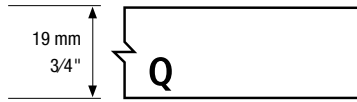
Default exterior profile: Y

# SLAB MODELS

## OPTION:

- See availability of same color melamine back, pages 26.

## SERIES 00 Category 1



Minimum dimensions for series 00 vary according to the exterior profile selected:

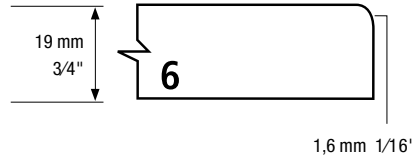
Doors and drawer fronts (Height x Width)

Design	Exterior profile	mm	inches
Slab	A, B, C, G, I, J, K, L, M, O, Q, R, S, T, U, V, Y, 6	38.1 x 38.1	1 1/2 x 1 1/2
Slab	D, E, W	50.8 x 50.8	2 x 2
Slab	F	76.2 x 76.2	3 x 3

Minimum charge of 0.19 sq.m. (2 sq.ft.) for thermoplastic fillers whose height or width is less than 76.2 mm (3") and whose length is greater than 1828 mm (72").

Frame and mullion doors not available in this model.

## SERIES 00 Category 1



Minimum dimensions for series 00 vary according to the exterior profile selected:

Doors and drawer fronts (Height x Width)

Design	Exterior profile	mm	inches
Slab	A, B, C, G, I, J, K, L, M, O, Q, R, S, T, U, V, Y, 6	38.1 x 38.1	1 1/2 x 1 1/2
Slab	D, E, W	50.8 x 50.8	2 x 2
Slab	F	76.2 x 76.2	3 x 3

Minimum charge of 0.19 sq.m. (2 sq.ft.) for thermoplastic fillers whose height or width is less than 76.2 mm (3") and whose length is greater than 1828 mm (72").

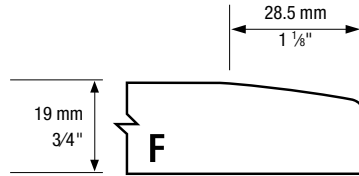
Frame and mullion doors not available in this model.

## STANDARD FEATURES

- White melamine back
- The default woodgrain direction is vertical

- Maximum door height: 2438 mm (96")
- Maximum door width: 1193 mm (47")

## SERIES 00 Category 1



Minimum dimensions for series 00 vary according to the exterior profile selected:

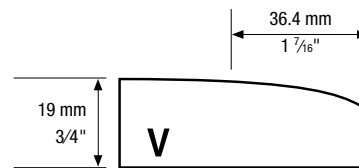
Doors and drawer fronts (Height x Width)

Design	Exterior profile	mm	inches
Slab	A, B, C, G, I, J, K, L, M, O, Q, R, S, T, U, V, Y, 6	38.1 x 38.1	1 1/2 x 1 1/2
Slab	D, E, W	50.8 x 50.8	2 x 2
Slab	F	76.2 x 76.2	3 x 3

Minimum charge of 0.19 sq.m. (2 sq.ft.) for thermoplastic fillers whose height or width is less than 76.2 mm (3") and whose length is greater than 1828 mm (72").

Frame and mullion doors not available in this model.

## SERIES 00 Category 2



Minimum dimensions for series 00 vary according to the exterior profile selected:

Doors and drawer fronts (Height x Width)

Design	Exterior profile	mm	inches
Slab	A, B, C, G, I, J, K, L, M, O, Q, R, S, T, U, V, Y, 6	38.1 x 38.1	1 1/2 x 1 1/2
Slab	D, E, W	50.8 x 50.8	2 x 2
Slab	F	76.2 x 76.2	3 x 3

Minimum charge of 0.19 sq.m. (2 sq.ft.) for thermoplastic fillers whose height or width is less than 76.2 mm (3") and whose length is greater than 1828 mm (72").

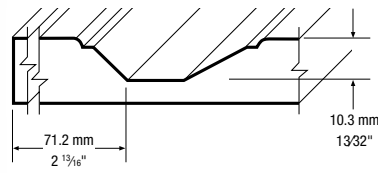
Frame and mullion doors not available in this model.

# STANDARD MODELS

## OPTIONS:

- See availability of same color melamine back, page 26.
- For regular rails drawer fronts, order as a door.

## SERIES 03 Category 4



Reduced rails

### Minimum dimensions

#### Doors (Height x Width)

Design	mm	inches
Square	225.0 x 225.0	8 7/8 x 8 7/8
Arch	240.0 x 225.0	9 15/32 x 8 7/8
Cathedral	265.0 x 225.0	10 7/16 x 8 7/8
Half Circle	$(W \div 2) + 82.5$ x 225.0	$(W \div 2) + 3 1/4$ x 8 7/8

#### Drawer fronts (Height x Width)

Design	mm	inches
Square	146.4 x 225.0	5 25/32 x 8 7/8
Arch	161.4 x 225.0	6 3/8 x 8 7/8
Cathedral	186.4 x 225.0	7 11/32 x 8 7/8
Half Circle	$(W \div 2) + 3.9$ x 225.0	$(W \div 2) + 5/32$ x 8 7/8

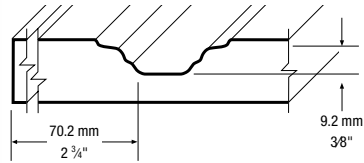
Default exterior profile: B



## STANDARD SPECIFICATIONS

- White melamine back
- The default woodgrain direction is vertical
- Drawer fronts are manufactured with reduced rails (unless regular rails are specified)
- Maximum door height: 2438 mm (96"), maximum door width: 1193 mm (47")

### SERIES 04 Category 2



Square



Arch



Cathedral



Half Circle



Reduced rails

#### Minimum dimensions

##### Doors (Height x Width)

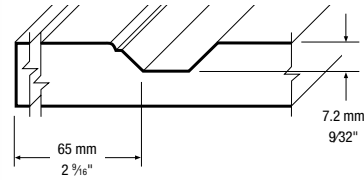
Design	mm	inches
Square	199.0 x 199.0	7 <sup>27</sup> / <sub>32</sub> x 7 <sup>27</sup> / <sub>32</sub>
Arch	214.0 x 199.0	8 <sup>7</sup> / <sub>16</sub> x 7 <sup>27</sup> / <sub>32</sub>
Cathedral	239.0 x 199.0	9 <sup>7</sup> / <sub>16</sub> x 7 <sup>27</sup> / <sub>32</sub>
Half Circle	((W÷2) + 75.1) x 199.0	((W÷2) + 2 <sup>31</sup> / <sub>32</sub> ) x 7 <sup>27</sup> / <sub>32</sub>

##### Drawer fronts (Height x Width)

Design	mm	inches
Square	136.4 x 199.0	5 <sup>3</sup> / <sub>8</sub> x 7 <sup>27</sup> / <sub>32</sub>
Arch	151.4 x 199.0	5 <sup>31</sup> / <sub>32</sub> x 7 <sup>27</sup> / <sub>32</sub>
Cathedral	179.4 x 199.0	7 <sup>3</sup> / <sub>32</sub> x 7 <sup>27</sup> / <sub>32</sub>
Half Circle	((W÷2) + 12.5) x 199.0	((W÷2) + <sup>1</sup> / <sub>2</sub> ) x 7 <sup>27</sup> / <sub>32</sub>

Default exterior profile: C

### SERIES 08 Category 3



Square



Arch



Cathedral



Half Circle



Reduced rails

#### Minimum dimensions

##### Doors (Height x Width)

Design	mm	inches
Square	185.1 x 185.1	7 <sup>5</sup> / <sub>16</sub> x 7 <sup>5</sup> / <sub>16</sub>
Arch	200.1 x 185.1	7 <sup>29</sup> / <sub>32</sub> x 7 <sup>5</sup> / <sub>16</sub>
Cathedral	225.1 x 185.1	8 <sup>7</sup> / <sub>8</sub> x 7 <sup>5</sup> / <sub>16</sub>
Half Circle	((W÷2) + 71.8) x 185.1	((W÷2) + 2 <sup>27</sup> / <sub>32</sub> ) x 7 <sup>5</sup> / <sub>16</sub>

##### Drawer fronts (Height x Width)

Design	mm	inches
Square	120.5 x 185.1	4 <sup>3</sup> / <sub>4</sub> x 7 <sup>5</sup> / <sub>16</sub>
Arch	135.5 x 185.1	5 <sup>11</sup> / <sub>32</sub> x 7 <sup>5</sup> / <sub>16</sub>
Cathedral	160.5 x 185.1	6 <sup>11</sup> / <sub>32</sub> x 7 <sup>5</sup> / <sub>16</sub>
Half Circle	((W÷2) + 7.8) x 185.1	((W÷2) + <sup>5</sup> / <sub>16</sub> ) x 7 <sup>5</sup> / <sub>16</sub>

Default exterior profile: B

# SPECIAL MODELS

## OPTION:

- See availability of same color melamine back, page 26.



## SERIES 908 Category 4

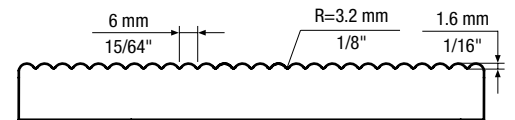


### Minimum dimensions

Doors (Height x Width)

mm	inches
76.2 x 76.2	3 x 3

Default exterior profile: I



The first groove starts at the center of the door.

## SERIES 916 Category 4

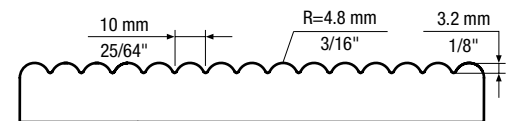


### Minimum dimensions

Doors (Height x Width)

mm	inches
76.2 x 76.2	3 x 3

Default exterior profile: J



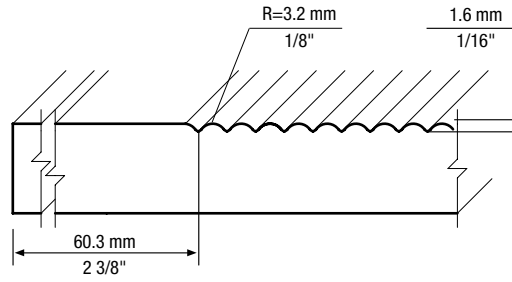
The first groove starts at the center of the door.

## STANDARD SPECIFICATIONS

- White melamine back
- The default woodgrain direction is vertical

- Maximum door height: 2438 mm (96"), maximum door width: 1193 mm (47")

### SERIES 21 Category 4



#### Minimum dimensions

Doors and drawer fronts (Height x Width)

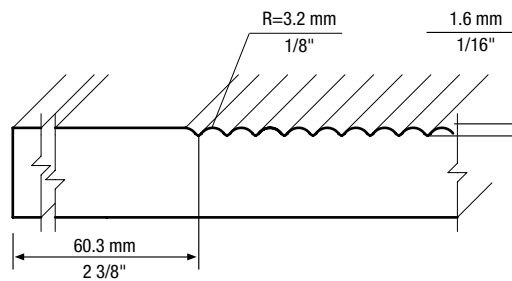
Design	mm	inches
Square	146.0 x 146.0	5 3/4 x 5 3/4

Reduced rails drawer fronts (Height x Width)

Design	mm	inches
Square	76.0 x 146.0	3 x 5 3/4

Default exterior profile: I

### SERIES 22 Category 4



#### Minimum dimensions

Doors and drawer fronts (Height x Width)

Design	mm	inches
Square	146.0 x 146.0	5 3/4 x 5 3/4

Reduced rails drawer fronts (Height x Width)

Design	mm	inches
Square	76.0 x 146.0	3 x 5 3/4

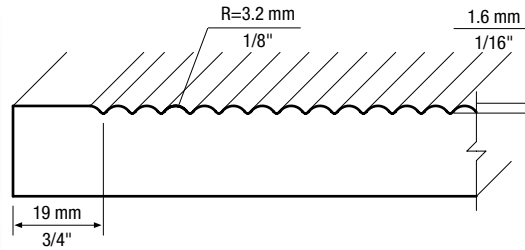
Default exterior profile: I

# SPECIAL MODELS

## OPTION:

- See availability of same color melamine back, page 26.

## SERIES 20 Category 4



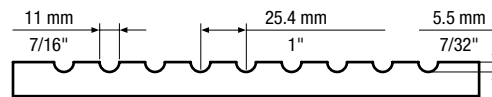
### Minimum dimensions

Doors and drawer fronts (Height x Width)

Design	mm	inches
Square	146.0 x 146.0	5 3/4 x 5 3/4

Default exterior profile: I

## SERIES 939 Category 3



The first groove starts at the center of the door.

### Minimum dimensions

Doors (Height x Width)

mm	inches
76.2 x 76.2	3 x 3

Default exterior profile: Q



# PERSONALIZED SIGNATURE

FRAME AND  
MULLION DOORS

PANELS

MOULDINGS

ACCESSORIES

TECHNICAL  
SPECIFICATIONS

# FRAME AND MULLION DOORS

**OPTION:**

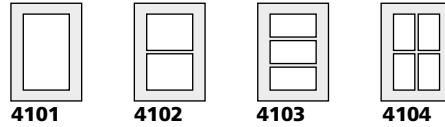
MDF core will be visible on the back of the frame or mullion door. It can be painted on request.



Model **4101**

## Standards

### SERIES 4100

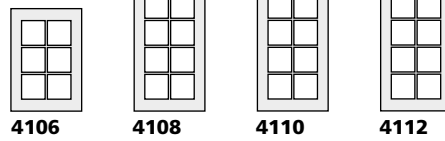


**4101 4102 4103 4104**

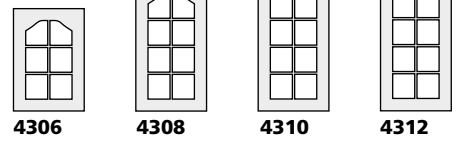
### SERIES 4300



**4301 4302 4303 4304**

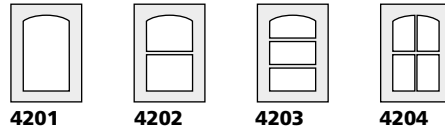


**4106 4108 4110 4112**



**4306 4308 4310 4312**

### SERIES 4200

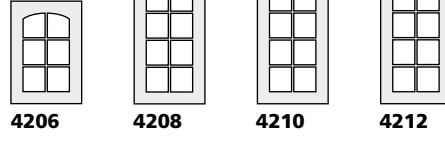


**4201 4202 4203 4204**

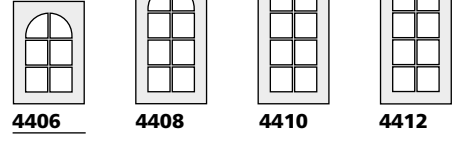
### SERIES 4400



**4401 4402 4403 4404**



**4206 4208 4210 4212**



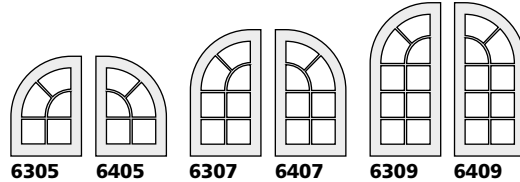
**4406 4408 4410 4412**



Model **4106**

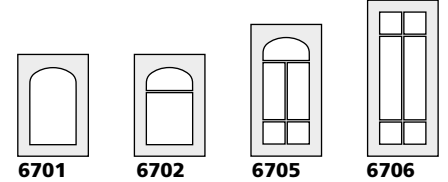
## Specials

### SERIES 6300-6400



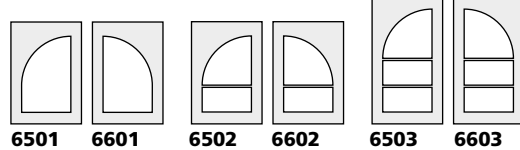
**6305 6405 6307 6407 6309 6409**

### SERIES 6700

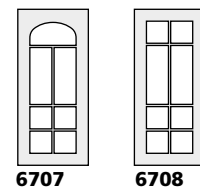


**6701 6702 6705 6706**

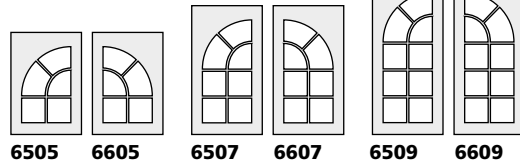
### SERIES 6500-6600



**6501 6601 6502 6602 6503 6603**

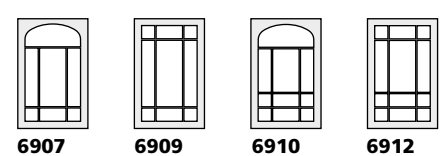


**6707 6708**



**6505 6605 6507 6607 6509 6609**

### SERIES 6900



**6907 6909 6910 6912**

# FRAME AND MULLION DOORS

## SPECIFICATIONS

- 1) For special frame and mullion doors (except series 6900), the door widths must be identical.
- 2) An interior profile must be specified for frame and mullion doors ordered with models 00, 79, 80.

Measures to subtract to calculate glass size

Design	Height		Width	
	mm	inches	mm	inches
03-04	H - 115	H - 4 1/2	W - 115	W - 4 1/2
08-51-52-55-56-67-70-72	H - 102	H - 4	W - 102	W - 4
41-64	H - 127	H - 5	W - 127	W - 5
42	H - 91	H - 3 9/16	W - 91	W - 3 9/16

H = Height W = width

## SPECIFICATIONS

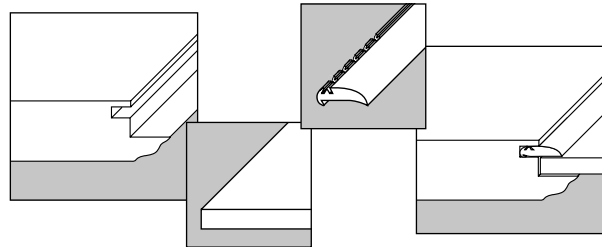
Suggested glass thickness: 3 mm (1/8") to 5 mm (3/16").  
For glass over 1219 mm (48"), glass thickness of 5 mm (3/16") is suggested.

Glass Retainer Moulding

Design	Colors
5351	Clear
5350	White

Sold per linear foot.

## GLASS INSTALLATION



## Minimum dimensions

Designs 4100 - 4200 - 4300	Height x Width	
	mm	inches
Lites		
01	203.2 x 203.2	8 x 8
02	279.4 x 203.2	11 x 8
03	368.3 x 203.2	14 1/2 x 8
04	279.4 x 279.4	11 x 11
06	368.3 x 279.4	14 1/2 x 11
08	457.2 x 279.4	18 x 11
10	546.1 x 279.4	21 1/2 x 11
12	635.0 x 279.4	25 x 11

Design 4400	Height x Width
Lites	
01	*
02	≥ W
03	≥ 1.4 x W
04	≥ W
06	≥ 1.4 x W
08	≥ 1.8 x W
10	≥ 2.2 x W
12	≥ 2.6 x W

\* Frames 4401 have the same minimum dimensions as their corresponding door model (ex.: 401, etc.).

Designs 6300 - 6400 - 6500 - 6600	Width
Series	
6305 - 6405	≥ 1.4 x W
6307 - 6407	≥ 1.6 x W
6309 - 6409	≥ 2 x W
6501 - 6601	≥ W
6502 - 6602	≥ 1.4 x W
6503 - 6603	≥ 1.6 x W
6505 - 6605	≥ 1.4 x W
6507 - 6607	≥ 1.6 x W
6509 - 6609	≥ 2.0 x W

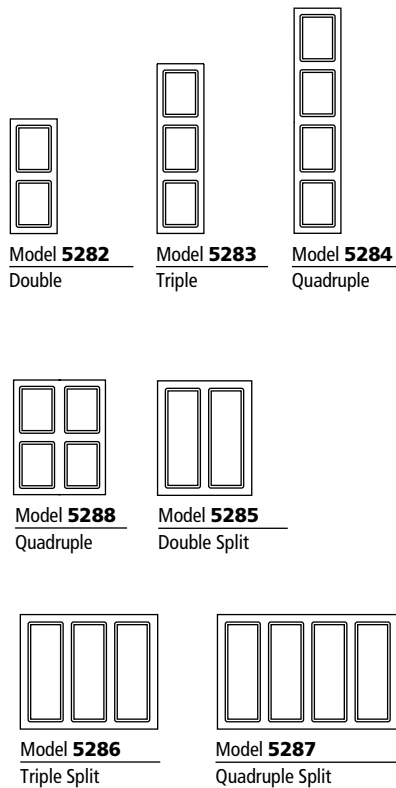
The center of the radius is not calculated from the door rail. Please contact Customer Service for more information.

Design 6700	Width
Series	
6701	≥ 0.6 x W
6702	≥ 0.9 x W
6705	≥ 1.5 x W
6706	≥ 1.5 x W
6707	≥ 1.9 x W
6708	≥ 1.9 x W

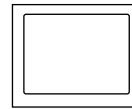
Design 6900	Height x Width
Series	
6907	500 x 444.5 19 11/16 x 17 1/2
6909	425 x 444.5 16 3/4 x 17 1/2
6910	600 x 444.5 23 5/8 x 17 1/2
6912	525 x 444.5 20 11/16 x 17 1/2

# PANELS

## Multiple Panels



## Frame for built-in appliances



Model **5560**

### SPECIFICATIONS

- 1) Inner and outer frame are available in all exterior profiles. Profiles by default are **J** for the interior profile and **Q** for the exterior profile.
- 2) Minimum rails dimension: 38.1 mm (1 1/2")

## Thermoplastic Foil

### Thermoplastic sheet

- 5000 : 1.2 m (4') wide.  
Length must be specified

### Peel and stick

- 5040 : 1.2 m x 2.4 m (4' x 8')

### Thermoplastic on phenolic

- 5060 : 1.2 m x 2.4 m (4' x 8')  
Thin HPL backing

Note: See page 26 for the available colors.

## Thermoplastic Laminated Panels

### Laminated particle board panels – Unilam (Phenolic paper)

#### ONE SIDE: THERMO FRONT / UNILAM BACK

- 5011 : 15.86 mm x 1.2 m x 2.7 m (5/8" x 4' x 9')
- 5013 : 15.86 mm x 1.2 m x 2.4 m (5/8" x 4' x 8')
- 5015 : 19.05 mm x 1.2 m x 2.4 m (3/4" x 4' x 8')

#### BOTH SIDES: THERMO FRONT / THERMO BACK

- 5010 : 15.86 mm x 1.2 m x 2.7 m (5/8" x 4' x 9')
- 5012 : 15.86 mm x 1.2 m x 2.4 m (5/8" x 4' x 8')
- 5019 : 19.05 mm x 1.2 m x 2.4 m (3/4" x 4' x 8')

### Laminated MDF Panels – MDF (one side)

#### THERMO FRONT / RAW MDF BACK

- 5014 : 6.3 mm x 1.2 m x 2.4 m (1/4" x 4' x 8')
- 5018 : 3.18 mm x 1.2 m x 2.4 m (1/8" x 4' x 8')
- 5027 : 19.05 mm x 1.2 m x 2.7 m (3/4" x 4' x 9')

### Laminated MDF Panels (Both sides)

#### THERMO FRONT / THERMO BACK

- 5017 : 19.05 mm x 1.2 m x 2.7 m (3/4" x 4' x 9')
- 5026 : 15.86 mm x 1.2 m x 2.4 m (5/8" x 4' x 8')

### Laminated MDF Panels – Melamine (one side)

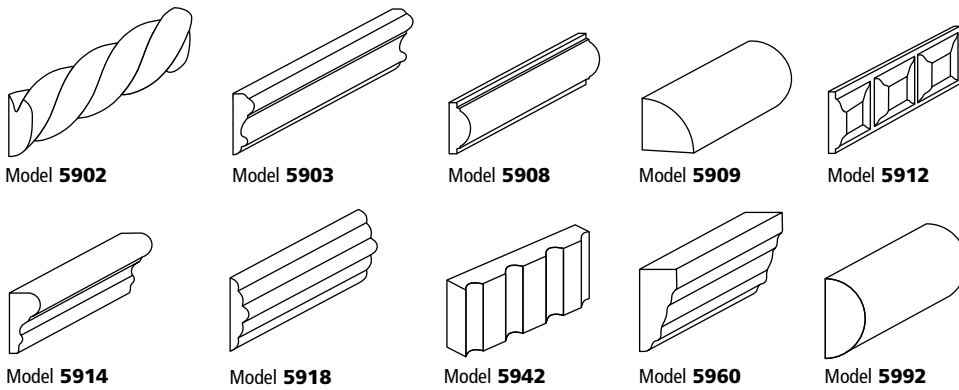
#### THERMO FRONT / MELAMINE BACK

- 5016 : 19.05 mm x 1.2 m x 2.7 m (3/4" x 4' x 9')
- 5024 : 15.86 mm x 1.2 m x 2.7 m (5/8" x 4' x 9')
- 5025 : 15.86 mm x 1.2 m x 2.4 m (5/8" x 4' x 8')

Note: See page 26 for specifications and colors availability.

# MOULDINGS AND ACCESSORIES

## Decorative Mouldings

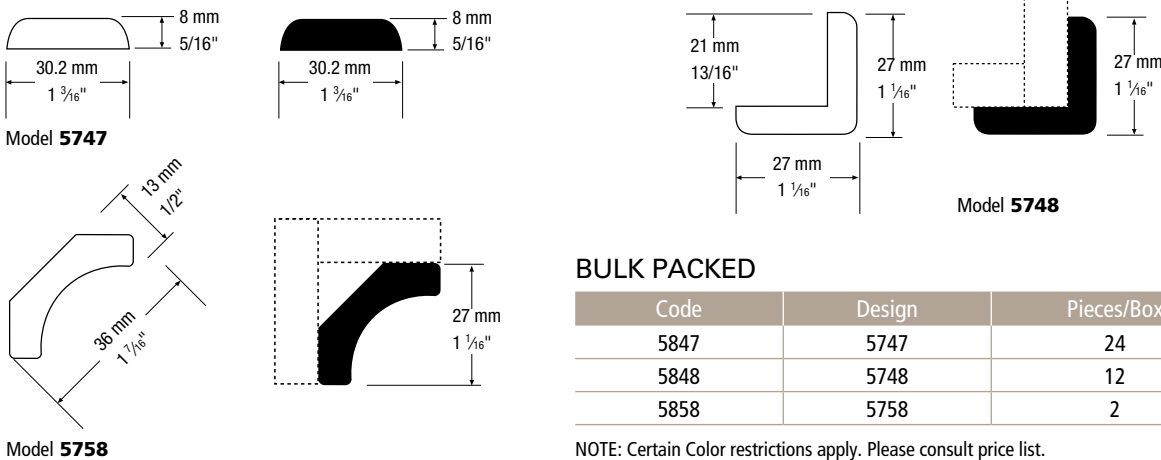


Design	Height x Thickness	
	mm	inches
5902	17.5 x 7	1 <sup>1</sup> / <sub>16</sub> x 9 <sup>3</sup> / <sub>32</sub>
5903	20.6 x 6.4	1 <sup>3</sup> / <sub>16</sub> x 1 <sup>1</sup> / <sub>4</sub>
5908	19 x 8	3 <sup>3</sup> / <sub>4</sub> x 5 <sup>5</sup> / <sub>16</sub>
5909	19 x 19	3 <sup>3</sup> / <sub>4</sub> x 3 <sup>3</sup> / <sub>4</sub>
5912	22.2 x 8	7 <sup>7</sup> / <sub>8</sub> x 5 <sup>5</sup> / <sub>16</sub>
5914	25.4 x 12	1 x 1 <sup>15</sup> / <sub>32</sub>
5918	27 x 6.4	1 1 <sup>1</sup> / <sub>16</sub> x 1 <sup>1</sup> / <sub>4</sub>
5942	25.4 x 19	1 x 3 <sup>3</sup> / <sub>4</sub>
5960	35 x 16	1 3 <sup>3</sup> / <sub>8</sub> x 5 <sup>5</sup> / <sub>8</sub>
5992	38 x 19	1 1 <sup>1</sup> / <sub>2</sub> x 3 <sup>3</sup> / <sub>4</sub>

## SPECIFICATIONS

- 1) Available in 2.4 m (8') lengths.
- 2) Definition of certain details varies according to the thickness of the thermoplastic foil.
- 3) Models 5902 and 5912 come in 2.38 m (94") lengths.

## Trim Moulding

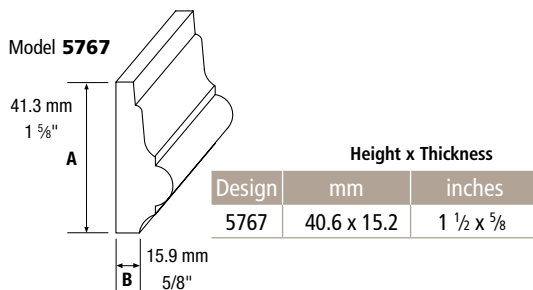


## BULK PACKED

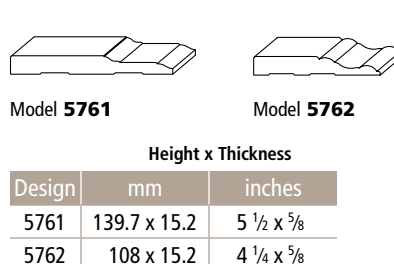
Code	Design	Pieces/Box
5847	5747	24
5848	5748	12
5858	5758	2

NOTE: Certain Color restrictions apply. Please consult price list.

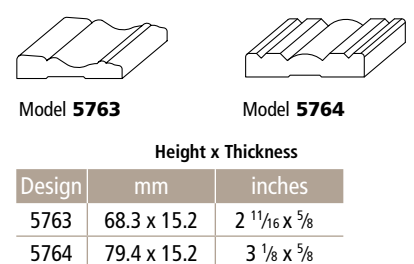
## Decorative moulding



## Baseboards

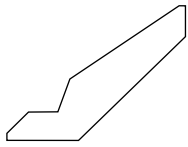


## Frame mouldings

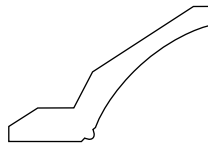


# MOULDINGS AND ACCESSORIES

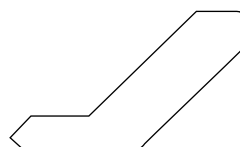
## Crown mouldings



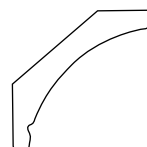
Model **5718**



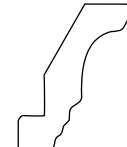
Model **5719**



Model **5721**



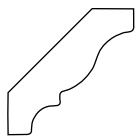
Model **5722**



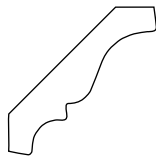
Model **5741**



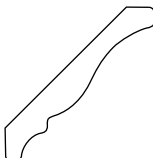
Model **5743**



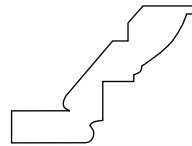
Model **5745**



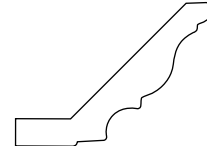
Model **5746**



Model **5751**



Model **5756**



Model **5757**

### Height x Thickness

Design	mm	inches
5718	99.1 x 24.6	3 15/16 x 3 1/32
5719	99.1 x 25	3 15/16 x 1
5721	65.1 x 19.1	2 9/16 x 3/4
5722	102.25 x 31.71	4 x 3/4
5741	76.2 x 17.5	3 x 11/16
5743	90.5 x 17.5	3 9/16 x 1 1/16
5745	69.9 x 17	2 3/4 x 43/64
5746	80.2 x 17.5	3 5/32 x 1 1/16
5751	108 x 15	4 1/4 x 19/32
5756	88.9 x 19.1	3 1/2 x 3/4
5757	139.7 x 30	5 1/2 x 1 11/64

### SPECIFICATIONS

- Available in 2.4 m (8') lengths.
- Available in all colors.

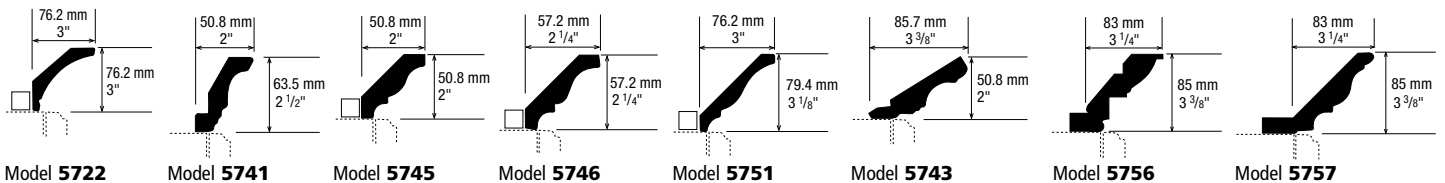
### BULK PACKED

Code	Design	Pieces/Box
5841	5741	4
5843	5743	4
5845	5745	4
5846	5746	4
5856	5756	2
5857	5757	2

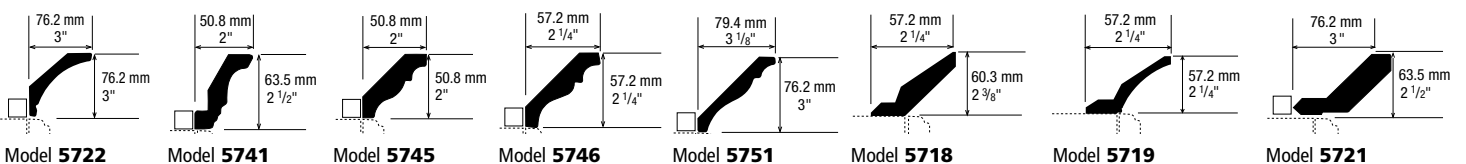
Note: some color restrictions apply.  
Please contact Customer Service for further details.

## Installation

### METHOD 1



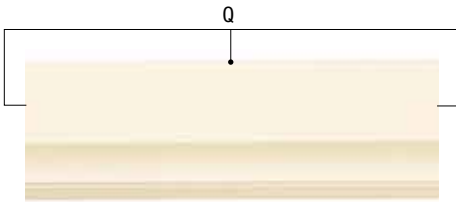
### METHOD 2



Crown mouldings should be glued and clamped rather than nailed.

# MOULDINGS AND ACCESSORIES

## 3" Standard Valances



Model **5601**

### SPECIFICATIONS

- 1) Standard valances are 76.2 mm (3") high with the bottom edge profiled.
- 2) All exterior profiles are available. (See page 1)
- 3) To order flat customized fillers, base mouldings or valances, order as slab doors and drawer fronts, product 2000 and 3000.
- 4) Minimum charge of 0.19 sq.m (2 sq.ft) for thermoplastic valances whose height or width is less than 76.2 mm (3") and whose length is greater than 1828 mm (72").
- 5) Woodgrain direction is horizontal.

## Custom Valances



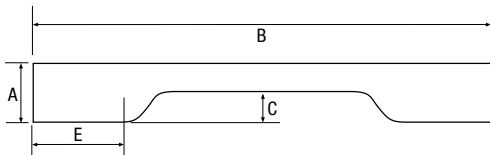
Model **5610**



Model **5620**

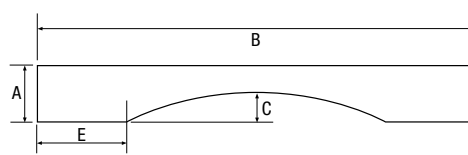
## Standard dimensions

Custom valance standard dimensions have been established as shown below. Measure A and B must be specified.



Models **5610**

- If **B** < 609.6 mm (24"), **E** = 76.2 mm (3")
- If **B** ≥ 609.6 mm (24"), **E** = 152.4 mm (6")
- If **A** < 203.2 mm (8"), **C** = 50.8 mm (2")
- If **A** ≥ 203.2 mm (8"), **C** = 101.6 mm (4")



Models **5620**

- If **B** < 508 mm (20"), **E** = 76.2 mm (3")
- If **B** ≥ 508 mm (20"), **E** = 101.6 mm (6")
- If **A** < 203.2 mm (8"), **C** = 50.8 mm (2")
- If **A** ≥ 203.2 mm (8"), **C** = 101.6 mm (4")

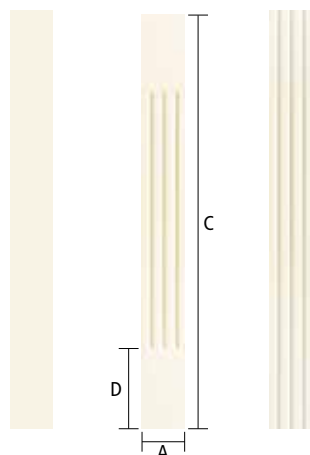
### Minimum dimensions

Design	A		B	
	mm	in.	mm	in.
5610 plain	101,6	4	330,2	13
5620 plain	101,6	4	304,8	12

### SPECIFICATIONS

- 1) Only the bottom edge is profiled. Please specify the edge profile.
- 2) Woodgrain pattern is horizontal. (Exeptions may apply, please contact Customer Sevice for further information.)

## Fillers



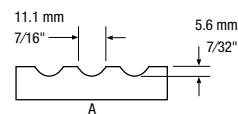
Model **5400**

Model **5430**

Model **5439**

### Standard dimensions

Design	Description	A		B		C	
		mm	in.	mm	in.	mm	in.
5400 plain		76.2	3	813	32	-	
5430 3 grooves		76.2	3	813	32	177.8	7
5439 3 full length grooves		76.2	3	813	32	-	



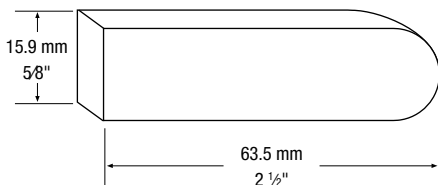
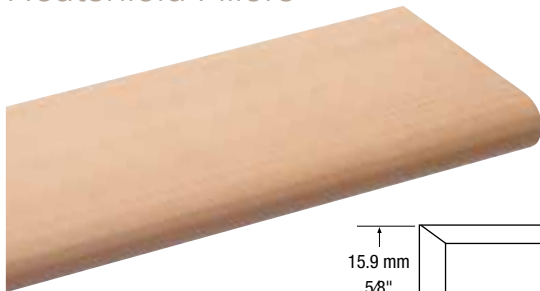
Note: If **C** is < 609,6 mm (24")  
**D** = 101,6 mm (4")

### SPECIFICATIONS

- 1) Default exterior profile: **Q**.
- 2) Not available with exterior profile: **V**.
- 3) The ratio is one groove per inch.
- 4) Different lengths are available on request for **A**, **C** and **D**.

# MOULDINGS AND ACCESSORIES

## Heatshield Fillers



**Heatshield fillers** are high-heat-resistant fillers/spacers for kitchen cabinet installations near a heat source. **HPL Heatshield fillers** are postformed components with a 180° profile, subjected to pretesting at temperatures exceeding 120°C (250°F) without delamination

Produced with compatible HPL, they are available in most colors. Please contact Customer Service for an up-to-date list of available colors..

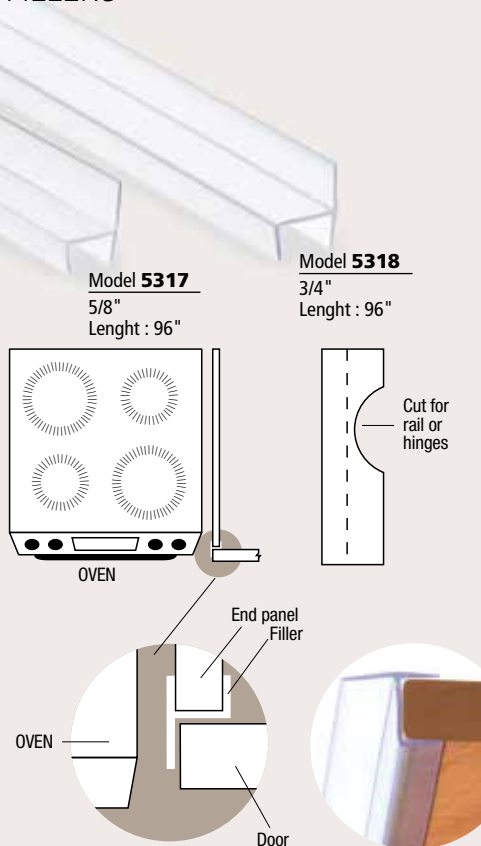
### SPECIFICATIONS

Design	m	ft
5315	1.2	4
5316	2.4	8

A 25.4 mm (1") HPL strip is supplied with each heatshield filler. After cutting the heatshield filler to size, use the edgebanding strip to finish the ends.

## Installation

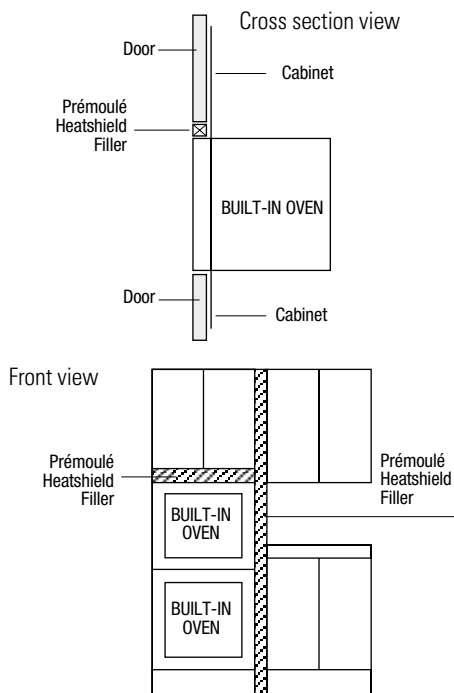
### CLEAR PLASTIC HEATSHIELD FILLERS



The clear plastic heatshield is a great option for cabinet installation close to a heat source. With the same resistance to heat as the HPL Heatshield fillers (250 °F / 120 °C), this clear plastic heatshield is compatible with all thermoplastic colors. It is easily installed along the edge of the end panel and requires no adhesive. If installing the heatshield around hinges or rails, a simple cut on the interior of the heatshield is sufficient.

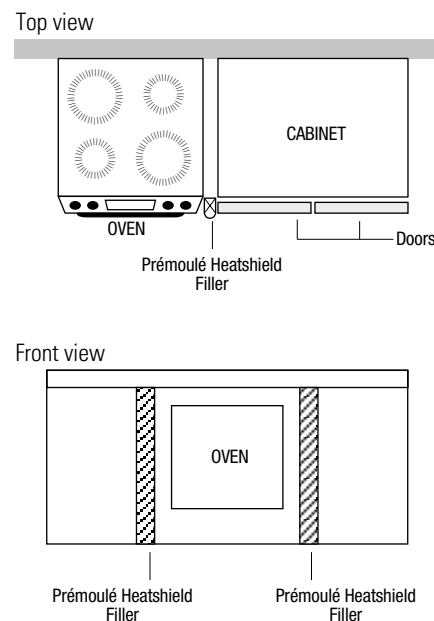
### WALL MOUNTED OVENS

The use of heatshield fillers is recommended, as mentioned for base ovens and cooktops. In addition, a 5/8"-3/4" filler should be fitted horizontally between the oven and the top door, aligned with the door surface.



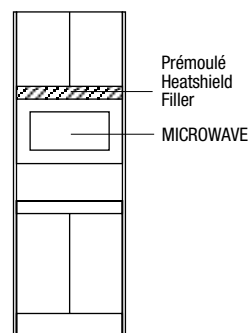
### BASE OVENS AND COOK TOPS

The heatshield filler must be mounted so that its surface is aligned with the adjacent door surface. The same recommendation applies to cook tops with front exhaust vents. The filler act as a shield against excessive radiant and convective heat associated with broiling (with the oven door open) and ovens with self-cleaning features.



### WALL MOUNTED MICROWAVE OVENS AND UNDERMOUNT COFFEE MAKERS

The heatshield filler mounted flush, or protruding slightly beyond the face surfaces of doors above, is recommended. This precludes possible surface damage and swelling of core material from excessive heat and/or steam.



### RESTRICTION

**Counter top appliances:** Care must be taken when using toasters, toaster ovens, portable grills and other heat/steam generating appliances to ensure that upper cabinet doors are not subjected to excessive temperatures

# MOULDINGS AND ACCESSORIES

## Decorative Tambours

### Available dimensions

Design Thickness 3.2 mm x 1/8 in.	Design Thickness 6.4 mm x 1/4 in.	m	pi.
5005	5055	0.6 x 0.6	2 x 2
5003	5052	0.6 x 1.2	2 x 4
5004	5054	1.2 x 1.2	4 x 4

### SPECIFICATIONS

- 1) Strip width: 12.7 mm (1/2")  
First strip: 38.1 mm (1 1/2")
- 2) The default woodgrain direction is vertical.  
Horizontal woodgrain available as an option.



## Edgebanding

Our thermoplastic edgebanding is formulated to be used with edgebanding machines operating at 77 °C (170 °F). Since standard edgebanding machines run at 88 °C (190 °F) to 99 °C (210 °F), we also offer PVC edgebanding which can be applied with the standard machines. Available finishes for each type of edgebanding are listed in the table on page 26.

### Thermoplastic Edgebanding

- 25.4 mm (1") wide
- 100 m (328') roll (5008)
- 2.4 m (8') length (5009)

### PVC Edgebanding

- 23.8 mm (15/16") wide
- 182.9 m (600') roll (5050)

### SPECIFICATIONS

- 1) Our warranty is applicable on thermoplastic products and does not apply to PVC edgebanding.
- 2) If PVC edgebanding is applied manually, we recommend using a high quality water-based contact cement to avoid damaging adjacent thermoplastic surfaces.



# TECHNICAL SPECIFICATIONS

## Product Properties

### Height and width tolerance

- $\pm 0.5$  mm (0.020")

### Warp tolerance per linear foot

- $\pm 0,8$  mm (1/32"). Refer to page 25 for recommended hinge holes.

### Heat resistance

- 85 °C (185 °F). See page 22 for installation near heat sources.

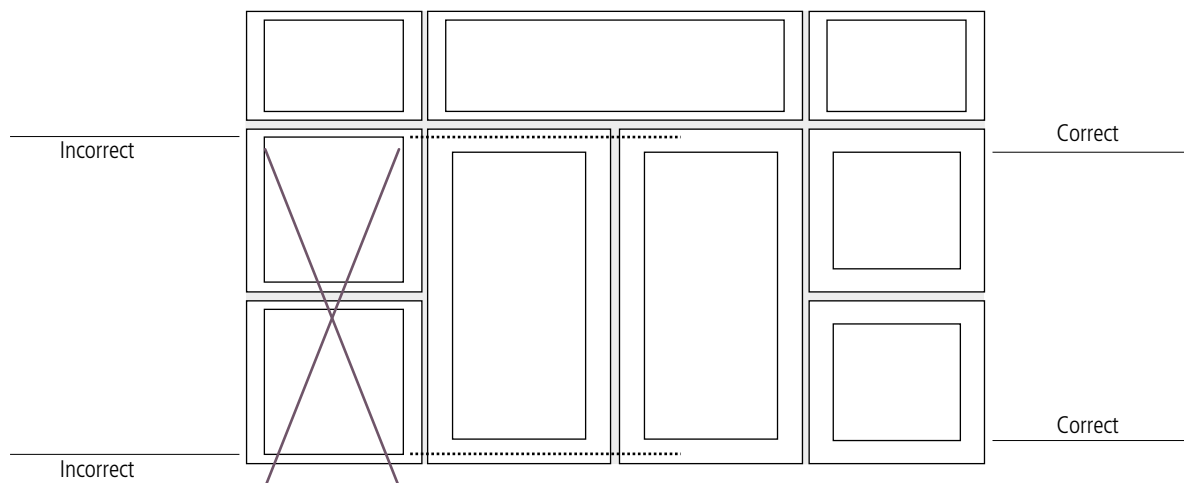
## Product Care and Maintenance

Thermoplastic doors can be easily cleaned with mild soap and water. However, as with any quality product, there are certain precautions you can take to preserve its value.

- Avoid the use of harsh chemicals, such as lacquer thinner, bleach or cleansers containing solvents or abrasives; especially avoid products containing toluene or acetone.
- Avoid bumping or hitting surface with a sharp object, since it could result in a permanent indentation or cut. In the event of abuse, minor surface scratches can sometimes be removed depending on the severity of the damage. The following is recommended:
  - 1) Rub the scratched area with a high grade polishing compound.
  - 2) Polish the area with a caruba based wax.
  - 3) Repair kits are available from paint companies specializing in touch up paints.
- Avoid exposure of doors and drawers to high heat. To ensure against damage to doors or drawers, please do the following:
  - 1) When broiling with oven door open, open doors and drawers of adjacent cabinets to minimize exposure to high heat.
  - 2) Since the door seals on some ranges and ovens allow high heat to escape during the self cleaning cycle, as a precaution, open or remove doors and drawers of adjacent cabinets during the self cleaning cycle. Please read the warranty and instructions for your appliances.
  - 3) Be aware of countertop appliances such as boilers, toasters and toaster ovens that create high heat conditions. They should not be directly under doors of overhead cabinets while in use.

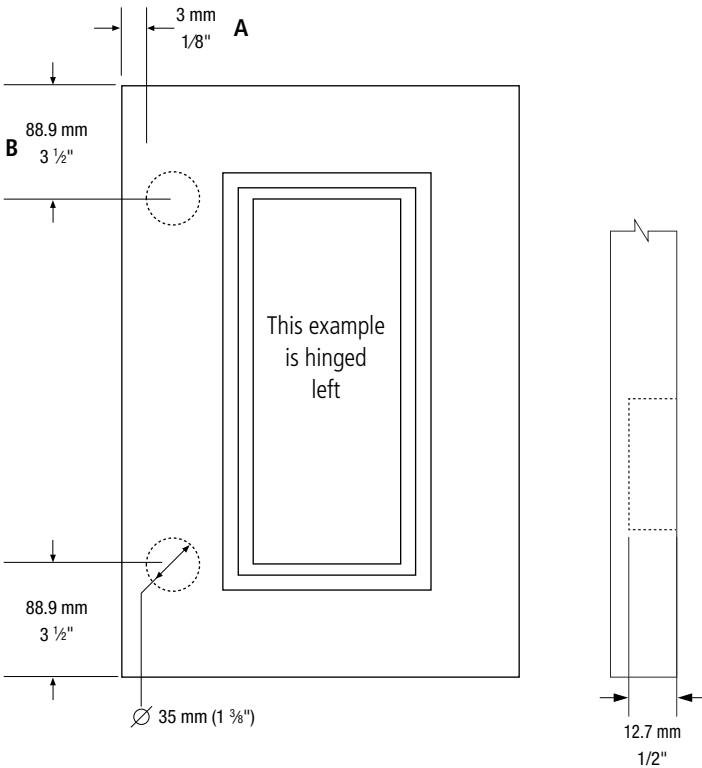
## Drawers fronts

We recommend ordering drawers fronts as doors rather than as reduced rails drawer fronts when they are over 228.6 mm (9") high.



# TECHNICAL SPECIFICATIONS

## Quantity and Location of Hinges



Standard hinge hole diameter: 35 mm (1 3/8")

Standard depth: 12.6 mm (1/2")

Standard location:

- for doors 254 mm (10") and over, 3 mm (1/8") from side and centred at 88.9 mm (3 1/2") from top or bottom edge of the door.
- for doors less than 254 mm (10"), 3 mm (1/8") from side and centred at 63.5 mm (2 1/2") from top or bottom edge of the door.

Note

For doors requiring more than 2 hinges, a drawing indicating actual position of the hinge holes is required.

Door height mm	Door height inches	Number of hinges required
0 to 899.16	0 to 35.4	2
899.17 to 1000.8	35.5 to 39.4	3
1000.9 to 1991.4	39.5 to 78.4	4
1991.5 to 2438.4	78.5 to 96	5

Minimum sizes indicated for each door model must be respected due to hinge clearance considerations.



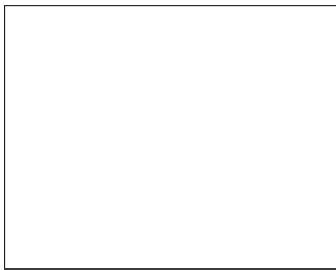
# COLORS AND FINISHES

Color	Description	Color Group(s)	Same Color Back	Foil with Peel & Stick	Official Melamine	Official HPL compatible option	Thermo Edge-banding	PVC Edge-banding
<b>A15WT</b>	Après-ski - Textured	B & C	•	•	Tafisa M2015 (Y)	T2015-VA		•
<b>A661S</b>	Moon Light - Satin	B & C	•	•	Tafisa L761 (C)	Tafisa T761-CR		•
<b>B20W</b>	Summer Flame Classic - Matte	B & C	•	•	Tafisa L420 (C)			•
<b>B21R</b>	White - Matte	A	White - Matte	•	Alternative: Tafisa L080 (C) Alternative : Tafisa L100 (C)	Alternative: Tafisa-CR Alternative: Tafisa-CR	•	•
<b>B44W</b>	Chocolate Espresso - Matte	B & C	•	•	Tafisa L444 (C)	Tafisa T444-CR	•	•
<b>B175R</b>	Snow White - Matte	B	White - Matte	•	Tafisa L175 (C)	Tafisa T175-CR		
<b>B775S</b>	Gardenia - Satin	B	White - Matte	•	Tafisa PM775	Tafisa T775-PM		•
<b>B776S</b>	Cashemire - Satin	B	White - Matte	•	Tafisa PM776	Tafisa T776-PM		•
<b>B777S</b>	Winter Horizon - Satin	B	White - Matte	•	Tafisa PM777	Tafisa T777-PM		•
<b>B778S</b>	Steel Blue- Satin	B	White - Matte	•	Tafisa PM778	Tafisa T778-PM		•
<b>B779S</b>	Sage Leaf- Satin	B	White - Matte	•	Tafisa PM779	Tafisa T779-PM		•
<b>B780S</b>	Terrarossa - Satin	B	White - Matte	•	Tafisa PM780	Tafisa T780-PM		•
<b>D492W</b>	White Chocolate - Textured	B & C	•	•	Tafisa L492 (R)	Tafisa T492(CR)		•
<b>F21W</b>	Candlelight - Matte	B & C	•	•	Tafisa L421 (C)	Tafisa T421-CR	•	•
<b>P488W</b>	Dolce Vita - Matte	B & C	•	•	Tafisa L488 (S)	Tafisa T488-SN (CR)		•
<b>P489W</b>	Copa Cabana - Textured	B & C	•	•	Tafisa L489 (S)	Tafisa T489-SN (CR)		•
<b>R105S</b>	White - Super Matte	B	White - Matte	•	Tafisa L105 (I)	Tafisa T105-CR		•
<b>R580WT</b>	Free Spirit - Textured	B & C	•	•	Tafisa L580 (K)	Tafisa T580-KA		•
<b>R581WT</b>	Sheer Beauty - Textured	B & C	•	•	Tafisa L581 (K)	Tafisa T581-KA		•
<b>R582WT</b>	Fashionista - Textured	B & C	•	•	Tafisa L582 (K)	Tafisa T582-KA		•
<b>R583WT</b>	The Chameleon - Textured	B & C	•	•	Tafisa L584 (K)	Tafisa T584-KA		•
<b>R660S</b>	Rain Cloud - Satin	B & C	•	•	Tafisa L760 (C)	Tafisa T760-CR		•
<b>R663S</b>	Morning Dew - Satin	B & C	•	•	Tafisa L763 (C)	Tafisa T763-PM (CR) (IS)		•
<b>V202S</b>	Summer Drops - Satin	B & C	•	•	Tafisa L202 (I) (C)	Tafisa T202-PM (CR)		•
<b>V590WT</b>	Love at First Sight - Textured	B & C	•	•	Tafisa L590 (K)	Tafisa T590-KA		•
<b>V591WT</b>	Acacia Honey - Textured	B & C	•	•	Tafisa L591 (K)	Tafisa T591-KA		•
<b>V592WT</b>	Kiss Curl - Textured	B & C	•	•	Tafisa L592 (K)	Tafisa T592-KA		•
<b>V593WT</b>	Mastermind - Textured	B & C	•	•	Tafisa L593 (K)	Tafisa T593-KA		•
<b>V629R</b>	Ivory - Matte	A & AA	•	•	Tafisa L204 (C)	Tafisa T204-CR	•	•

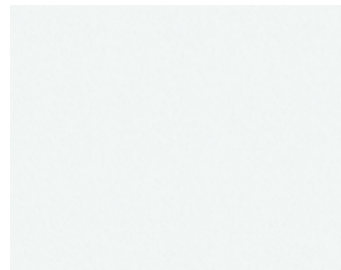
Heatshield fillers are available for some colors, with alternative HPL compatible options.  
Please contact customer service for more information.

The ultimate responsibility rests solely with the end user with respect to acceptability of these options in specific applications.

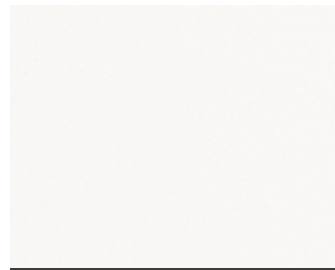
# COLORS AND FINISHES



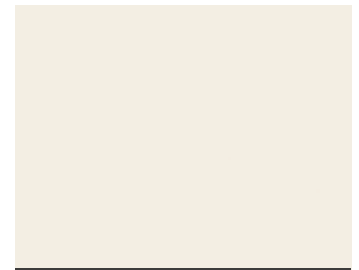
**R105S**  
White - Super Matte



**B175R**  
Snow White - Matte



**B21R**  
White - Matte



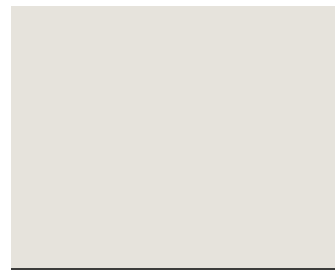
**B775S**  
Gardenia - Satin



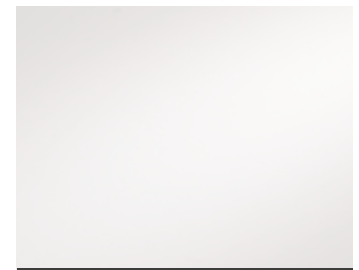
**B779S**  
Sage Leaf - Satin



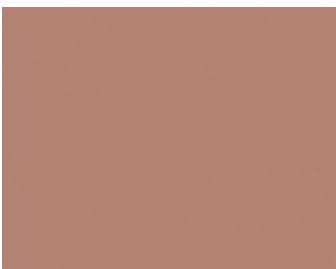
**V629R**  
Ivory - Matte



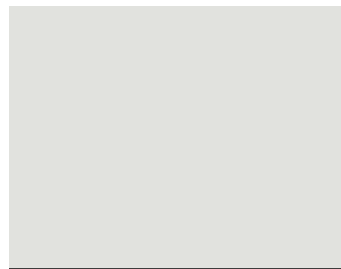
**B776S**  
Cashmere - Satin



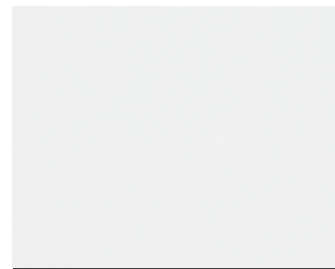
**R663S**  
Morning Dew - Satin



**B780S**  
Terrarossa - Satin



**B777S**  
Winter Horizon - Satin



**V202S**  
Summer Drops - Satin



**R660S**  
Rain Cloud - Satin



**B778S**  
Steel Blue - Satin



**A661S**  
Moon Light - Satin



**D492W**  
White Chocolate - Matte



**R580WT**  
Free Spirit - Textured



**V593WT**  
Mastermind - Textured



**R584WT**  
The Chameleon - Textured



**V590WT**  
Love at First Sight - Textured



**V591WT**  
Acacia Honey - Textured

# COLORS AND FINISHES

---



**R581WT**  
Sheer Beauty - Textured



**A15WT**  
Après-ski - Textured



**P488W**  
Dolce Vita - Matte



**V592WT**  
Kiss Curl - Textured



**R582WT**  
Fashionista - Textured



**P489W**  
Copa Cabana - Matte



**B44W**  
Chocolate espresso - Textured



**F21W**  
Candlelight - Matte



**B20W**  
Summer Flame Classic - Matte

CERTIFICATE OF  
WARRANTY

10 YEARS

APPLICABLE TO THERMOPLASTIC PRODUCTS  
Starting on January 1<sup>st</sup> 2011 (see conditions on reverse)

Distributor

Invoice #

Date of purchase



# CERTIFICATE OF WARRANTY

## 1. General Terms and Conditions

Prémoulé guarantees its thermoplastic products which are distributed and sold through an authorized distributor.

The installation should only be done by an experienced professional. It is also the responsibility of the person installing the product to determine its suitability for a particular application.

Prémoulé guarantees its products against yellowing, delamination or any apparent or hidden defect that might affect their quality or cause premature deterioration. The following conditions apply:

## 2. Duration

This guarantee is valid for a period of 10 years following the date of purchase.

## 3. Exclusions

This guarantee does not apply:

### 3.1 When damages are caused:

- by misuse or abuse of the product by the buyer
- by improper installation or exposure to the elements
- by any modification, transformation, or correction of the product without a written authorization from Prémoulé;
- by improper storage;
- by any indirect damage (including incidentals, special or consequential damages);
- by exposure to a temperature over 85 °C (185 °F)

### 3.2 To any deterioration of the product resulting from normal wear and tear.

### 3.3 To any damage or incident relating to the costs of installation and transportation, or any other costs relative to the application of this guarantee.

## 4. Scope

This guarantee is unassignable and constitutes the only guarantee offered by Prémoulé.

**There is no guarantee of merchantability or fitness for specific purposes other than the guarantee detailed above. Prémoulé makes no other guarantee whatsoever, expressed or implied, oral or written.**

## 5. Execution of Guarantee

For the duration of this guarantee, in order to exercise his rights, the buyer shall notify as soon as possible the authorized distributor or PRÉMOULÉ of any defect in the product and shall provide proof of purchase or the back of this present certificate properly completed. The buyer shall not make any repairs before the authorized distributor has had an opportunity to examine the product and its installation.

When this guarantee is applicable, Prémoulé may repair its products, provide replacement products or, at its sole option, offer the reimbursement of the purchase price.

## 6. Authorized Distributor

Only an authorized Prémoulé distributor may, in compliance with the terms and conditions of this guarantee, assume the obligations contained herein after obtaining prior authorization from Prémoulé. The authorized distributor is not mandated by Prémoulé to modify or extend the scope of this guarantee.



# WÜRTH BAER SUPPLY COMPANY

## THERMOPLASTIC DOORS AND COMPONENTS

### **Würth Baer Supply Company**

909 Forest Edge Drive  
Vernon Hills, IL 60061  
T: 800-289-2237  
F: 888-558-2237  
[www.wurthbaersupply.com](http://www.wurthbaersupply.com)

### **Other locations:**

Bensenville, IL  
Bethlehem, PA  
Brooklyn Heights, OH  
Columbus, OH  
Des Moines, IA  
Eagan, MN  
Edison, NJ  
Harrisburg, PA  
Indianapolis, IN

Kansas City, MO  
Leetsdale, PA  
Londonderry, NH  
Middletown, OH  
Oak Park, MI  
Omaha, NE  
Pennsauken, NJ  
Pleasant Hill, IA  
Plymouth, MN

Reading, PA  
Rumford, RI  
Sanford, NC  
Sioux Falls, SD  
Syracuse, NY  
Versailles, KY  
West Haven, CT  
Williamsport, PA  
Wilmington, DE