



**Würth Baer Supply Company**

# **CABINET HARDWARE INSTALLATION TOOLS**



**EASY • ACCURATE • COST-EFFECTIVE**

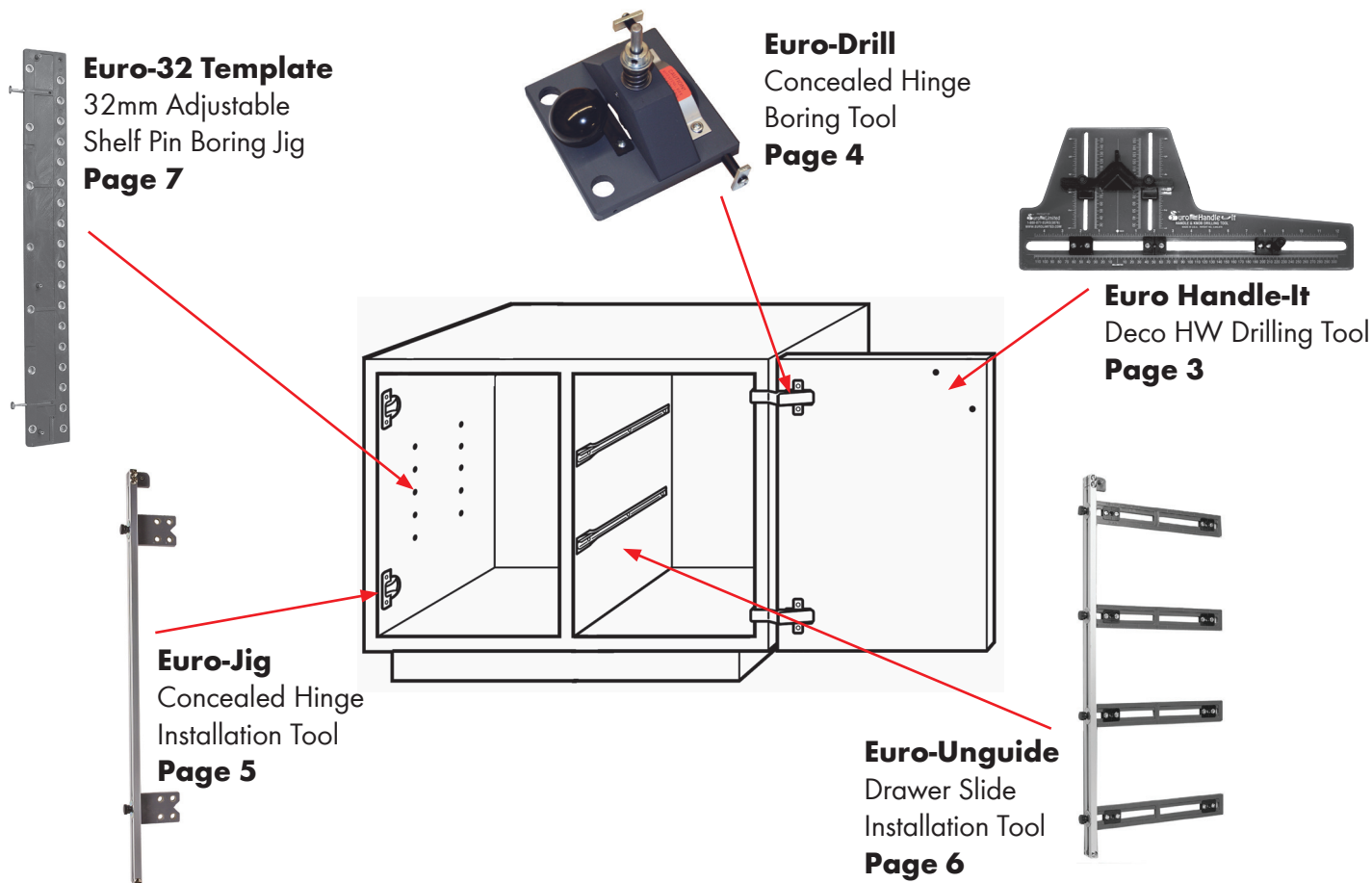


Established in 1980 Euro Limited has become a leader in innovative development and manufacturing of small tools and jigs. Each tool was designed to create an integrated system of tools to use specifically for the installation of cabinet hardware.

Combining cutting edge technology with innovative ideas, Euro Limited offers quality products that help cabinet makers and installers achieve efficient application with time saving, consistent and quality workmanship.

With Euro Limited products there is no need to buy cost prohibitive large expensive hinge boring, line boring or CNC machines. Euro Limited produces affordable products and offers a "complete system" of tools that will solve all your cabinet hardware installation needs.

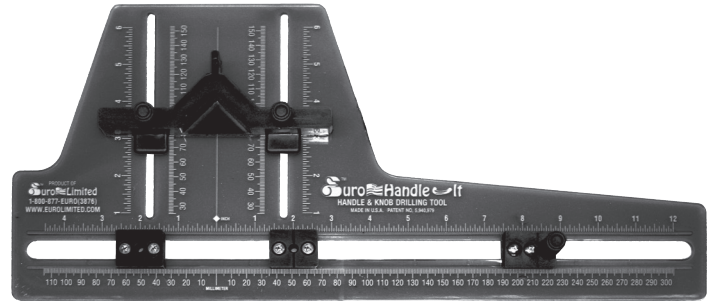
Euro Limited has patented over a dozen tools and continues to develop new products.



## EURO HANDLE-IT

### Decorative Hardware Drilling Tool

- English and metric scales for use on all handles
- Height adjustment to center of a 12" high drawer front
- Movable positioning stop for use on drawer fronts of the same size
- Installs handles as large as 24" (600mm)
- V-notch in fence for use in installing handles at a 45-degree angle
- Made of polycarbonate (aircraft canopy material) making it virtually unbreakable

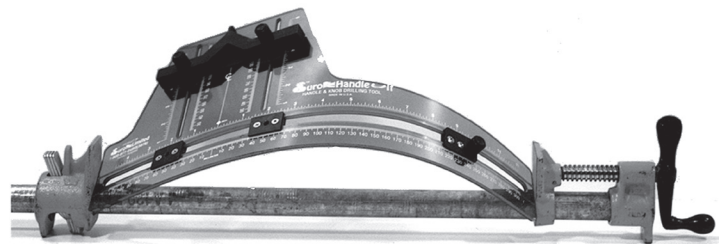


### Specifications:

Template: Polycarbonate plastic

Replaceable Bushings: Hardened steel

Size: 0.187" Thick x 8" Wide x 18.25" Long



Polycarbonate (aircraft canopy material) is virtually unbreakable

Item #	Description	Price
ELEHIT	Dec Hardware Drilling Tool	\$49.95
ELEHIT-BUSHING	Replacement Bushings Kit*	\$13.25

\* Includes 4 bushings, screws and washers

## EURO-DRILL

### Concealed Hinge Boring Tool



- Use with any 3/8" drill or drill press
- Compact and portable, ideal for shop and field operations
- Automatic boring depth stop
- Special non-skid base protects work and inhibits movement during operation
- Centerline mark provides easy alignment
- 32mm compatible
- Uses standard 35mm x 57mm boring bit (not included)

#### Specifications:

Base and bridge: Machined PVC

Bearing: Bronze

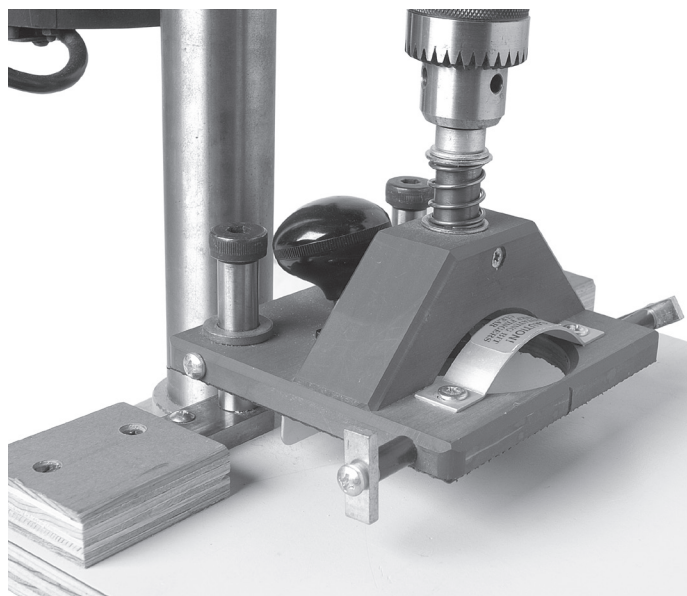
Shaft: Machined steel

Fence: Aluminum

Size: 6.75" Wide x 5" Deep x 6.5" High, assembled

Item #	Description	Price
ELED	Concealed Hinge Boring Tool	\$116.75
ELHBB-35X57	Boring Bit, 35mm x 57mm	\$32.50

### Drill Press Kit



- Specially designed to fit the Euro-Drill to your drill press
- Easy to assemble
- Can be easily removed from drill press for job site use

Item #	Description	Price
ELDPK	Drill Press Kit only, Euro-Drill	\$61.12

## EURO-JIG

### Concealed Hinge Installation Tool

- Quickly and accurately locates European concealed hinge plates
- Lightweight, durable construction
- Will locate all makes of concealed hinges regardless of cup size
- "V" locator templates set to door hinge arm, then transfers layout to cabinet
- Minimal setup time allows for changing hinge locations quickly
- Works for overlay, inset, and face frames
- Will effectively set doors up to 50" tall
- Length 28-3/4", designed to clear existing countertops, making Euro-Jig ideal for refacing operations

#### Specifications:

Rails: Extruded aluminum

Templates: Lexan-polycarbonate plastic

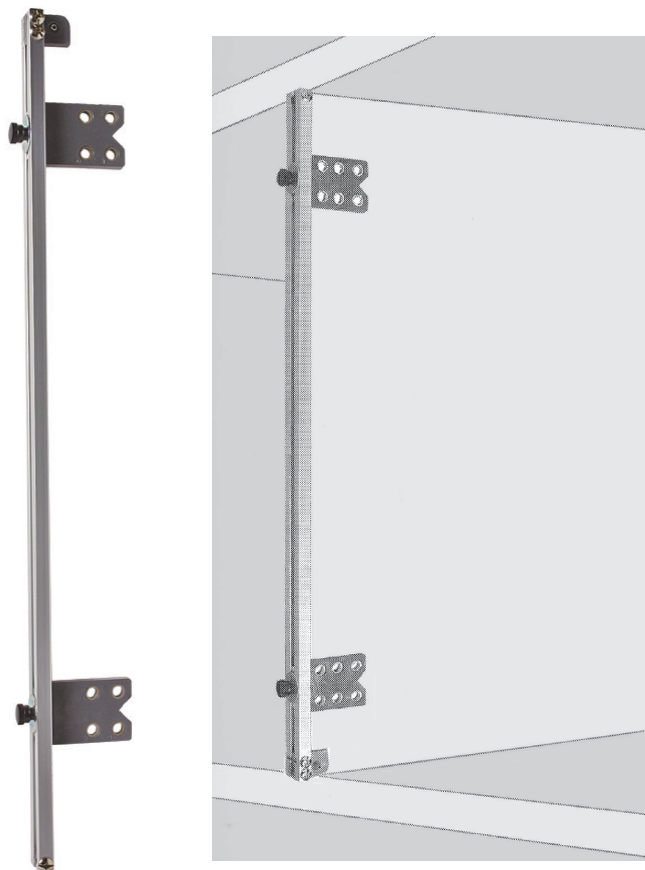
Bushings: Steel

Rail connectors: Chrome steel

Knobs: Plastic with steel studs

Size: 11.75" Wide x 1.5" Deep x 28.75" Long, assembled

Item #	Description	Price
ELEJ200	Hinge Installation Jig	\$77.70



#### REQUIRED - SOLD SEPARATELY

EURO-JIG requires use of Self-Centering Euro-Bit Tool and bit. Other brands of boring bits will not work due to 40mm shank. See page 8 for additional information.

Item #	Description	Price
ELEB	Euro-Bit Drilling Tool Only	\$43.50
ELBB-5X70MM	40mm Shank Boring Bit, 5mm x 70mm	\$20.02
ELBB-7/64X40MM	40mm Shank Boring Bit Adapter, 7/64 x 40mm (bit not included)	\$11.18
WW16270764	Drill Bit, 7/64" (sold in multiples of 12 each)	\$1.99 each



## EURO-UNIGUIDE

### Drawer Slide Installation Tool

- Locates pilot holes for all brands of drawer slides
- For use with regular and full extension slides
- Infinite vertical adjustment for various drawer sizes and layouts
- Positions guides for overlay and inset conditions
- Install 1 to 4 slides in a single operation
- No vertical layout marks required as tool is set directly to tape measure
- Length 28-3/4", designed to clear countertops, making Uniguide ideal for refacing operations

#### Specifications:

Rails: Extruded aluminum

Templates: Lexan-polycarbonate plastic

Rail connectors: Chrome steel

Knobs: Plastic with steel studs

Size: 11.75" Wide x 1.5" Deep x 28.75" Long, assembled



#### REQUIRED - SOLD SEPARATELY

EURO-UNIGUIDE requires use of Self-Centering Euro-Bit Tool and bit. Other brands of boring bits will not work due to 40mm shank. See page 8 for additional product information.

Item #	Description	Price
ELEUG	Drawer Slide Installation Jig	\$90.50

Item #	Description	Price
ELEB	Euro-Bit Drilling Tool Only	\$43.50
ELBB-5X70MM	40mm Shank Boring Bit, 5mm x 70mm	\$20.02
ELBB-7/64X40MM	40mm Shank Boring Bit Adapter, 7/64 x 40mm (bit not included)	\$11.18
WW16270764	Drill Bit, 7/64" (sold in multiples of 12 each)	\$1.99 each

## EURO-32 TEMPLATE

### 32mm Adjustable Shelf Pin Boring Jig

- To drill 5mm or 1/4" holes
- Use on cabinet parts or constructed cabinets
- Drill dowel holes for cabinet assembly
- Use for 32mm construction
- Steel bushings for long life
- Drill infinite rows of holes
- Locating pins for 37mm inset of holes
- Adjustable stops for inset greater than 37mm

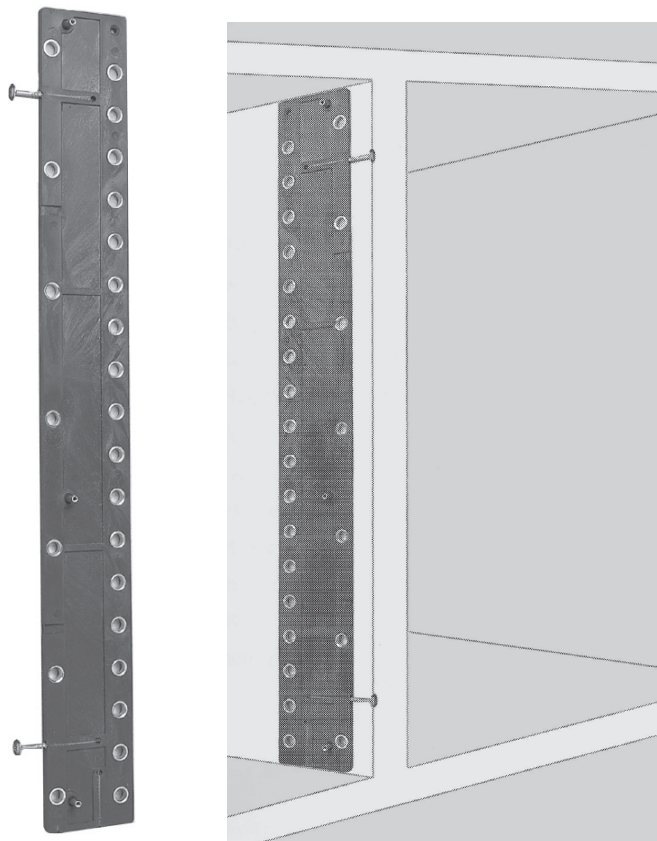
#### Specifications:

Template: Plastic

Bushings: Steel

Size: 0.25" Thick x 2.81" Wide x 23.875" Long

Item #	Description	Price
ELE32T	Shelf Pin Boring Jig	\$42.85



#### REQUIRED - SOLD SEPARATELY

EURO 32 TEMPLATE requires use of Self-Centering Euro-Bit Tool and bit. Other brands of boring bits will not work due to 40mm shank. See page 8 for additional product information.

Item #	Description	Price
ELEB	Euro-Bit Drilling Tool Only	\$43.50
ELBB-5X70MM	40mm Shank Boring Bit, 5mm x 70mm	\$20.02
ELBB-1/4X70MM	40mm Shank Boring Bit, 1/4" x 70mm	\$20.96

## EURO-BIT & ACCESSORIES



ELEB



ELBB-5X70MM



ELBB-7/64X40MM (bit sold separately)

### Self-Centering Drilling Tool

- Designed for use with Euro-Uniguide, Euro-Jig and Euro-32 Template
- Tip has excellent chip ejection

**NOTE:** Requires purchase of Euro-Bit accessories listed below. Other brands of boring bits will not work due to 40mm shank.

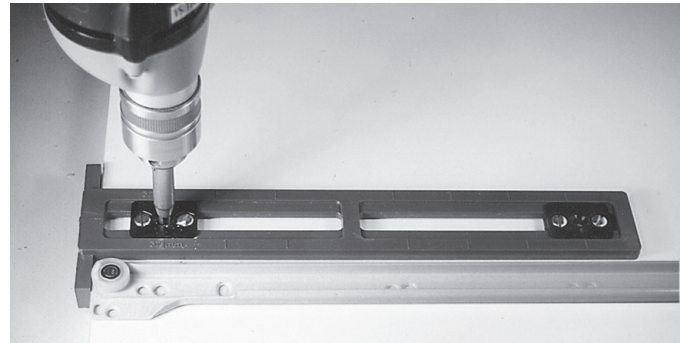
### Self-Centering Drilling Tool Accessories

- Carbide-tipped for precision drilling in melamine, veneer, plywood and hardwoods with no splintering
- Carbide tip spur bits same as a multi spindle boring machine

Item #	Description	Price
ELEB	Euro-Bit Drilling Tool Only	\$43.50
ELBB-5X70MM	40mm Shank Boring Bit, 5mm x 70mm	\$20.02
ELBB-1/4X70MM	40mm Shank Boring Bit, 1/4" x 70mm	\$20.96
ELBB-7/64X40MM	40mm Shank Boring Bit Adapter, 7/64 x 40mm (drill bit not included, see bit below)	\$11.18
WW16270764	Drill Bit, 7/64" (sold in multiples of 12 each)	\$1.99 each

## EASY GUIDE & EASY DRILL

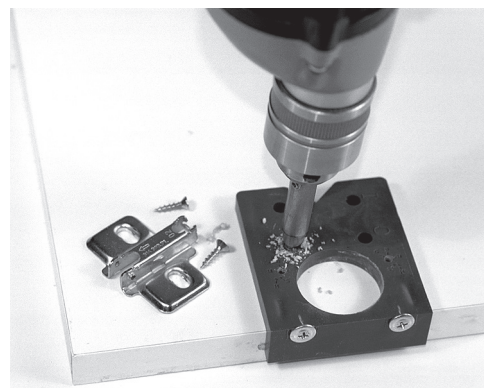
### Drawer Slide Jig, Economy



- Fast and accurate, reusable
- Installs regular or full extension slides
- Centerline easy alignment
- High impact polycarbonate

Item #	Description	Price
ELEASYGUIDE	Drawer Slide Jig	\$14.99

### Hinge and Plate Boring/Installation Jig, Economy



- Locate
- Drill
- Mount

- Fast and accurate, reusable
- Drill for all brands of hinges
- High impact polycarbonate

Item #	Description	Price
ELEASYDRILL	Hinge and Plate Boring/Installation Jig	\$8.99