



# WÜRTH BAER SUPPLY COMPANY

## Floating Cabinet & Shelf Brackets Catalog



TRADEMARK

**INNOVASHelf**

ESTABLISHED 2017

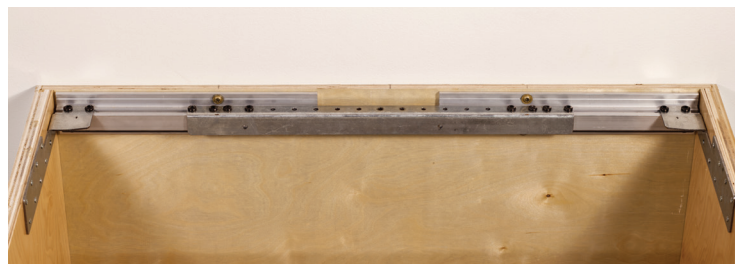


## FCB Series, Floating Cabinet Bracket Sets Designed To Install Floating Cabinets

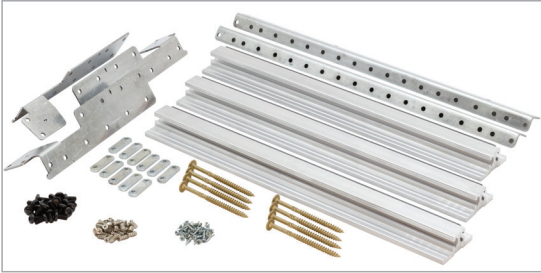


- Available in kits for cabinets 15-84" wide
- Width easily adjusts to accommodate any size cabinet
- Kits include all components necessary to hang a floating cabinet
- Compatible with hardwood, plywood, MDF, and particle-board cabinets
- Can be assembled in shop or on jobsite
- 1000 lbs weight bearing capacity if installed into two or more studs

### Installed - View From Above



## FCB Series, Floating Cabinet Bracket Sets



**Cabinet Size: 56"W-84"W**

Item #	Weight Cap.	Min. Cab. Width	Max. Cab. Width
ISFCB-5684	1000 lbs.	56"	84"



**Cabinet Size: 42"W-56"W**

Item #	Weight Cap.	Min. Cab. Width	Max. Cab. Width
ISFCB-4256	1000 lbs.	42"	56"



**Cabinet Size: 29"W-42"W**

Item #	Weight Cap.	Min. Cab. Width	Max. Cab. Width
ISFCB-2942	1000 lbs.	29"	42"



**Cabinet Size: 21"W-29"W**

Item #	Weight Cap.	Min. Cab. Width	Max. Cab. Width
ISFCB-2129	500 lbs.	21"	29"



**Cabinet Size: 15"W-21"W**

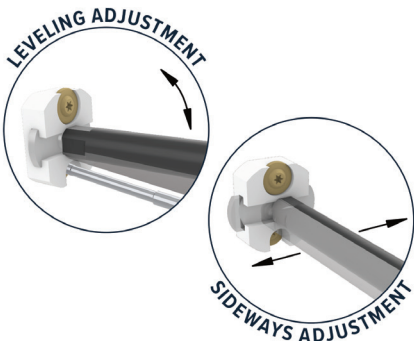
Item #	Weight Cap.	Min. Cab. Width	Max. Cab. Width
ISFCB-1521	500 lbs.	15"	21"



# TIMBER-LOC Series, Floating Solid Shelf Brackets Designed To Install Solid Wood Shelves



## Bi-directional adjustment:



- Includes all hardware necessary to mount shelves
- Designed for shelves 1-1/2" to 8" thick
- Wood stud application

## TIMBER-LOC Drilling Jig:



- Multi-step drilling operation creates a hole tailored to the TIMBER-LOC brackets, ensuring a perfect fit
- Automatically centers the hole in the back of the shelf, guaranteeing a straight hole and eliminating blowout
- Adjusts to any size shelf up to 3-1/2" thick
- Cam-lock secures the jig to the shelf for the entire operation



# TIMBER-LOC Series, Floating Solid Shelf Brackets



## 300 Lb. Weight Capacity For Wood Substrate, 2-3/4" x 5/8"

- Bi-directional adjustment, designed for shelves 1-1/2"-8" thick
- Weight capacity: 300 lbs per pair
- Dimensions: 2-3/4" wall plate height x 5/8" arm height
- Includes all hardware necessary to mount and secure shelves

Size	Item #	Size	Item #	Size	Item #
4"L	ISTBR-LOC-2762-04	6"L	ISTBR-LOC-2762-06	8"L	ISTBR-LOC-2762-08



## 200 Lb. Weight Capacity For Wood Substrate, 1-3/4" x 5/8"

- Bi-directional adjustment, designed for shelves 1-1/2"-8" thick
- Weight capacity: 200 lbs per pair
- Dimensions: 1-3/4" wall plate height x 5/8" arm height
- Includes all hardware necessary to mount and secure shelves

Size	Item #	Size	Item #	Size	Item #
4"L	ISTBR-LOC-1762-04	6"L	ISTBR-LOC-1762-06	8"L	ISTBR-LOC-1762-08



## 100 Lb. Weight Capacity For Wood Substrate, 1-1/4" x 1/2"

- Bi-directional adjustment, designed for shelves 1-1/2"-8" thick
- Weight capacity: 100 lbs per pair
- Dimensions: 1-1/4" wall plate height x 1/2" arm height
- Includes all hardware necessary to mount and secure shelves

Size	Item #	Size	Item #	Size	Item #
4"L	ISTBR-LOC-1250-04	6"L	ISTBR-LOC-1250-06	8"L	ISTBR-LOC-1250-08



## Timber-LOC Drilling Kit

- Adjusts to any size shelf up to 3 1/2" thick
- Automatically centers the hole in the back of the shelf, guaranteeing a straight hole and eliminating blowout
- Creates a hole tailored to the TIMBER-LOC brackets, ensuring a perfect fit

Item #	Description
ISDR-JIG	Drilling Kit



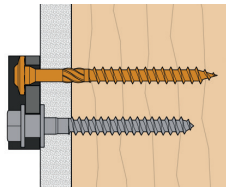
# T-LOC Series, Floating Shelf Brackets Designed To Install Hollow Shelves



## Mounting Substrates:

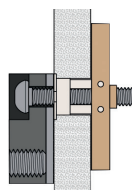
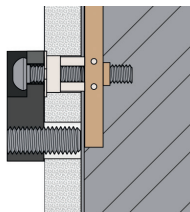
### WOOD STUD

- Kit includes: (2) Brackets, (2) T-LOC plates, (2) double headed lags, (2) structural screws, (2) poly blocks, and (2) trim screws.
- Top is secured by structural screw and bottom is secured by patented double headed lag. Both install directly into stud.



### DRYWALL/STEEL STUD

- Kit includes: (2) Brackets, (2) T-LOC plates, (2) heavy duty toggle bolts, (2) adjustment plates, (4) grub bolts, (2) poly blocks, and (2) trim screws.
- Steel Stud: Shelf is secured with a toggle bolt that holds the bracket plate in place. Adjustments are made via a 1" grub screw that tightens against the steel stud.
- Drywall: Shelf is secured with a toggle bolt that holds the bracket plate in place. There is an additional backer plate that is secured between the plate and the wall. Adjustments are made via a 1/2" grub screw that tightens against the backer plate.



## Patented Leveling System:



### What makes InnovaShelf different?

- The secret lies in the patented T-LOC system
- T-LOC utilizes a specially designed slotted base plate that slides onto the screws for adjustability and strength
- Brackets and arms are crafted from high quality materials for maximum strength and durability



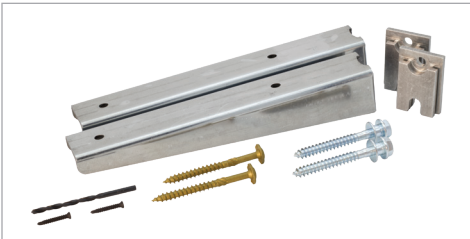
# T-LOC Series, Floating Shelf Brackets



## 1000 Lb. Weight Capacity For Wood Substrate, 3-1/2" x 2-1/2"

- Adjustable 2-piece floating shelf bracket, designed for shelves 2" thick or more
- Weight capacity: 1000 lbs per pair
- Dimensions: 3-1/2" wall plate height x 2-1/2" arm height
- Includes all hardware necessary to mount and secure shelves
- Shelf is secured to bracket with self-tapping trim screws

Size	Item #	Size	Item #	Size	Item #
14"L	IST-LOC-3525-14W	18"L	IST-LOC-3525-18W	20"L	IST-LOC-3525-20W
16"L	IST-LOC-3525-16W				



## 450 Lb. Weight Capacity For Wood Substrate, 2" x 1-1/2"

- Adjustable 2-piece floating shelf bracket, designed for shelves 2" thick or more
- Weight capacity: 450 lbs per pair
- Dimensions: 2" wall plate height x 1-1/2" arm height
- Includes all hardware necessary to mount and secure shelves
- Shelf is secured to bracket with self-tapping trim screws

Size	Item #	Size	Item #	Size	Item #
6"L	IST-LOC-2015-06W	12"L	IST-LOC-2015-12W	18"L	IST-LOC-2015-18W
8"L	IST-LOC-2015-08W	14"L	IST-LOC-2015-14W	20"L	IST-LOC-2015-20W
10"L	IST-LOC-2015-10W	16"L	IST-LOC-2015-16W		



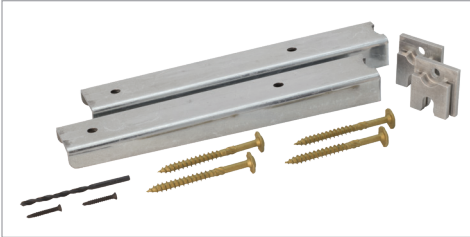
## 300 Lb. Weight Capacity For Wood Substrate, 1-1/2" x 1-1/2"

- Adjustable 2-piece floating shelf bracket, designed for shelves 2" thick or more
- Weight capacity: 300 lbs per pair
- Dimensions: 1-1/2" wall plate height x 1-1/2" arm height
- Includes all hardware necessary to mount and secure shelves
- Shelf is secured to bracket with self-tapping trim screws

Size	Item #	Size	Item #	Size	Item #
6"L	IST-LOC-1515-06W	12"L	IST-LOC-1515-12W	18"L	IST-LOC-1515-18W
8"L	IST-LOC-1515-08W	14"L	IST-LOC-1515-14W	20"L	IST-LOC-1515-20W
10"L	IST-LOC-1515-10W	16"L	IST-LOC-1515-16W		



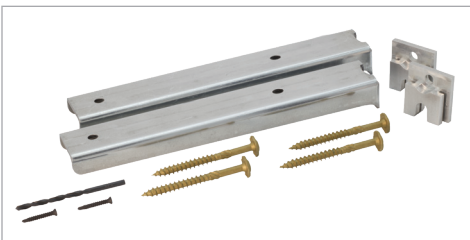
# T-LOC Series, Floating Shelf Brackets



## 250 Lb. Weight Capacity For Wood Substrate, 1-1/2" x 1"

- Adjustable 2-piece floating shelf bracket, designed for shelves 2" thick or more
- Weight capacity: 250 lbs per pair
- Dimensions: 1-1/2" wall plate height x 1" arm height
- Includes all hardware necessary to mount and secure shelves
- Shelf is secured to bracket with self-tapping trim screws

Size	Item #	Size	Item #	Size	Item #
6"L	IST-LOC-1510-06W	10"L	IST-LOC-1510-10W	14"L	IST-LOC-1510-14W
8"L	IST-LOC-1510-08W	12"L	IST-LOC-1510-12W	16"L	IST-LOC-1510-16W



## 200 Lb. Weight Capacity For Wood Substrate, 1-1/2" x 3/4"

- Adjustable 2-piece floating shelf bracket, designed for shelves 2" thick or more
- Weight capacity: 200 lbs per pair
- Dimensions: 1-1/2" wall plate height x 3/4" arm height
- Includes all hardware necessary to mount and secure shelves
- Shelf is secured to bracket with self-tapping trim screws

Size	Item #	Size	Item #	Size	Item #
6"L	IST-LOC-1575-06W	10"L	IST-LOC-1575-10W	14"L	IST-LOC-1575-14W
8"L	IST-LOC-1575-08W	12"L	IST-LOC-1575-12W		

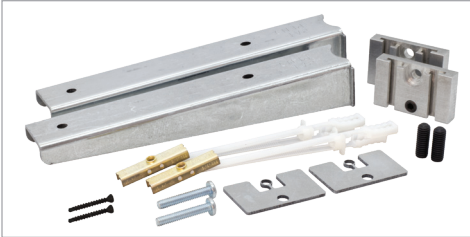


## 100/150 Lb. Weight Capacity For Drywall/Steel Substrate, 2" x 1-1/2"

- Adjustable 2-piece floating shelf bracket, designed for shelves 2" thick or more
- In drywall weight cap: 100 lbs per pair / in steel weight cap: 150 lbs per pair
- Dimensions: 2" wall plate height x 1-1/2" arm height
- Includes all hardware necessary to mount and secure shelves
- Shelf is secured to bracket with self-tapping trim screws

Size	Item #	Size	Item #	Size	Item #
6"L	IST-LOC-2015-06DS	12"L	IST-LOC-2015-12DS	18"L	IST-LOC-2015-18DS
8"L	IST-LOC-2015-08DS	14"L	IST-LOC-2015-14DS	20"L	IST-LOC-2015-20DS
10"L	IST-LOC-2015-10DS	16"L	IST-LOC-2015-16DS		

# T-LOC Series, Floating Shelf Brackets



## 80/120 Lb. Weight Capacity For Drywall/Steel Substrate, 1-1/2" x 1-1/2"

- Adjustable 2-piece floating shelf bracket, designed for shelves 2" thick or more
- In drywall weight cap: 80 lbs per pair / in steel weight cap: 120 lbs per pair
- Dimensions: 1-1/2" wall plate height x 1-1/2" arm height
- Includes all hardware necessary to mount and secure shelves
- Shelf is secured to bracket with self-tapping trim screws

Size	Item #	Size	Item #	Size	Item #
6"L	IST-LOC-1515-06DS	12"L	IST-LOC-1515-12DS	18"L	IST-LOC-1515-18DS
8"L	IST-LOC-1515-08DS	14"L	IST-LOC-1515-14DS	20"L	IST-LOC-1515-20DS
10"L	IST-LOC-1515-10DS	16"L	IST-LOC-1515-16DS		



## 80/120 Lb. Weight Capacity For Drywall/Steel Substrate, 1-1/2" x 1"

- Adjustable 2-piece floating shelf bracket, designed for shelves 2" thick or more
- In drywall weight cap: 80 lbs per pair / in steel weight cap: 120 lbs per pair
- Dimensions: 1-1/2" wall plate height x 1" arm height
- Includes all hardware necessary to mount and secure shelves
- Shelf is secured to bracket with self-tapping trim screws

Size	Item #	Size	Item #	Size	Item #
6"L	IST-LOC-1510-06DS	10"L	IST-LOC-1510-10DS	14"L	IST-LOC-1510-14DS
8"L	IST-LOC-1510-08DS	12"L	IST-LOC-1510-12DS	16"L	IST-LOC-1510-16DS



## 80/120 Lb. Weight Capacity For Drywall/Steel Substrate, 1-1/2" x 3/4"

- Adjustable 2-piece floating shelf bracket, designed for shelves 2" thick or more
- In drywall weight cap: 80 lbs per pair / in steel weight cap: 120 lbs per pair
- Dimensions: 1-1/2" wall plate height x 3/4" arm height
- Includes all hardware necessary to mount and secure shelves
- Shelf is secured to bracket with self-tapping trim screws

Size	Item #	Size	Item #	Size	Item #
6"L	IST-LOC-1575-06DS	10"L	IST-LOC-1575-10DS	14"L	IST-LOC-1575-14DS
8"L	IST-LOC-1575-08DS	12"L	IST-LOC-1575-12DS		



## EZ-LOC Series, Floating Shelf Brackets

### Designed To Install Hollow Shelves, Light Duty



- Includes all hardware necessary to mount and secure shelves
- Adjustable 2-piece floating shelf bracket
- ISEZ-LOC-1010 compatible with 2" thick shelves without dados

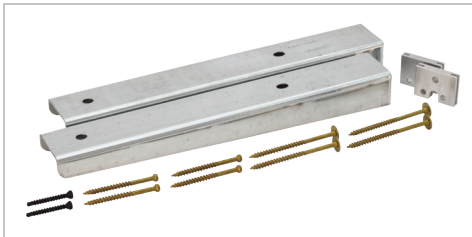
## EZ-LOC Series, Floating Shelf Brackets



### 125 Lb. Weight Capacity For Wood Substrate, 1-1/4" x 1"

- Adjustable 2-piece floating shelf bracket, designed for shelves 2" thick or more
- Weight capacity: 125 lbs per pair
- Dimensions: 1-1/4" wall plate height x 1" arm height
- Includes all hardware necessary to mount and secure shelves

Size	Item #	Size	Item #
6"L	ISEZ-LOC-1210-06W	10"L	ISEZ-LOC-1210-10W
8"L	ISEZ-LOC-1210-08W	12"L	ISEZ-LOC-1210-12W



### 100 Lb. Weight Capacity For Wood Substrate, 1" x 1"

- Adjustable 2-piece floating shelf bracket, designed for shelves 2" thick or more
- Weight capacity: 100 lbs per pair
- Dimensions: 1" wall plate height x 1" arm height
- Includes all hardware necessary to mount and secure shelves

Size	Item #	Size	Item #
6"L	ISEZ-LOC-1010-06W	10"L	ISEZ-LOC-1010-10W
8"L	ISEZ-LOC-1010-08W	12"L	ISEZ-LOC-1010-12W







## WÜRTH BAER SUPPLY COMPANY

### Floating Cabinet & Shelf Brackets

#### Würth Baer Supply Company

909 Forest Edge Drive  
Vernon Hills, IL 60061  
T: 800-289-2237  
F: 888-558-2237  
[www.wurthbaersupply.com](http://www.wurthbaersupply.com)

#### Other locations:

Bensenville, IL

Bethlehem, PA

Brooklyn Heights, OH

Columbus, OH

Des Moines, IA

Eagan, MN

Edison, NJ

Harrisburg, PA

Indianapolis, IN

Kansas City, MO

Leetsdale, PA

Londonderry, NH

Middletown, OH

Oak Park, MI

Omaha, NE

Pennsauken, NJ

Pleasant Hill, IA

Plymouth, MN

Reading, PA

Rumford, RI

Sanford, NC

Sioux Falls, SD

Syracuse, NY

Versailles, KY

West Haven, CT

Williamsport, PA

Wilmington, DE

Source Code: BP4159